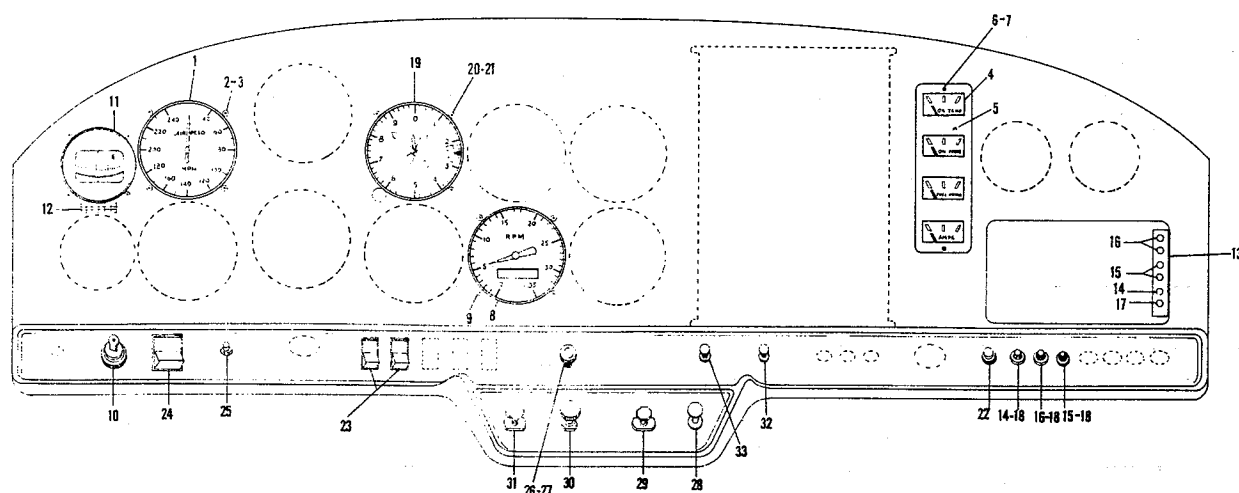


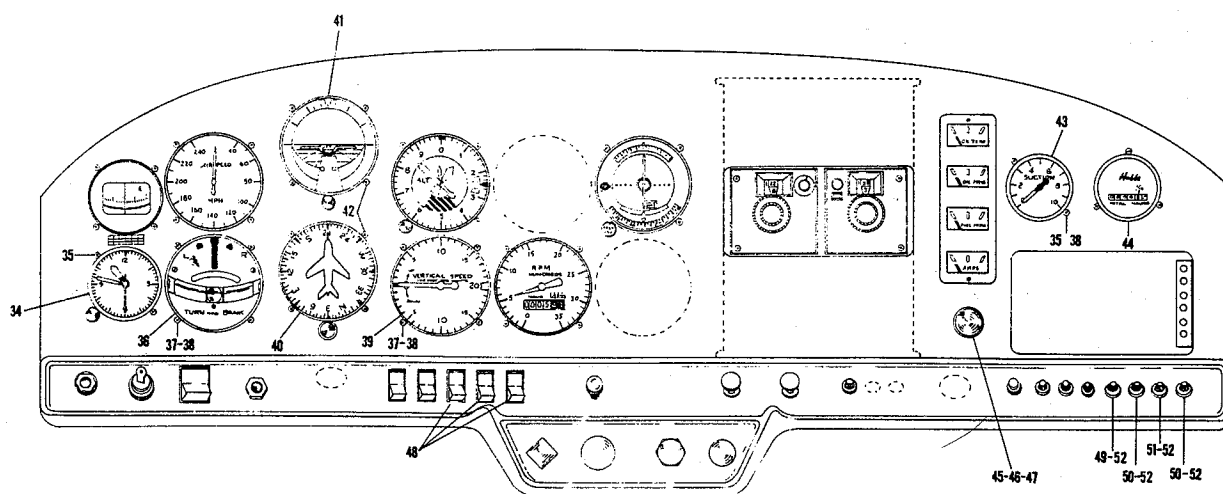
FIGURE 37. HEATING SYSTEM



FIGURE AND INDEX NO.	PART NUMBER	DESCRIPTION	UNITS PER ASSY	USABLE ON CODE
		1 2 3 4 5 6 7		
37-		HEATING SYSTEM		
-1	406001-501	Valve Assy - - - - -	1	
	406001-502	Housing Assy - - - - -	1	
	406001-503	Shaft Assy - - - - -	1	
	406001-504	Valve Assy - - - - -	1	
	406001-7	Flange Tube - - - - -	1	
	MS20365-632	Nut - - - - -	2	
	AN526-632R7	Screw - - - - -	2	
	NAS1368N4C	Grommet - - - - -	2	
	AN530-6R4	Screw - - - - -	2	
-2	406001-1	Duct Make From CAT-8 (Thermoid) - - - - -	1	
-3	406001-2	Duct Make From CAT-6 (Thermoid) - - - - -	1	
-4	QS100M36S	Clamp - - - - -	2	
-5	QS100M1GS	Clamp - - - - -	1	
-6	64-032	Control (Arens) - - - - -	1	
-7	MS2919DGS3	Clamp - - - - -	1	
		Attaching Parts		
	AN743-13	Bracket - - - - -	1	
	1247-0408	Rivet - - - - -	2	
	AN526-1032R6	Screw - - - - -	1	
	MS20364-1032	Nut - - - - -	1	
-8	406004-1	Outlet - - - - -	1	
-9	406004-2	Slide - - - - -	1	
-10	MS20426A3-4	Rivet - - - - -	6	
-11	AN960-3	Washer - - - - -	6	
-12	901039-501	End Fitting Assy - - - - -	1	
	901039-2	Bolt - - - - -	1	
	901039-1	Bearing - - - - -	1	
	AN960-10	Washer - - - - -	1	
	AN320-3	Nut - - - - -	1	
	MS24665-132	Cotter Pin - - - - -	1	
-13	AN3-12A	Bolt - - - - -	1	
-14	AN960-10	Washer - - - - -	4	
-15	MS20364-1032	Bolt - - - - -	1	
-16	WL725	Clamp (Weckesser) - - - - -	1	
-17	MS20392-2C83	Pin - - - - -	1	
-18	AN960-10	Washer - - - - -	1	
-19	MS24665-132	Cotter Pin - - - - -	2	
-20	406004-3	Divider - - - - -	1	



STANDARD



OPTIONAL

FIGURE 38. INSTALLATION - STANDARD EQUIPMENT



FIGURE AND INDEX NO.	PART NUMBER	DESCRIPTION	UNITS PER ASSY	USABLE ON CODE
		1 2 3 4 5 6 7		
38-		INSTALLATION - STANDARD EQUIPMENT		
-1	801013-1	Airspeed Indicator - - - - -	1	
-2	AN515B6R12	Screw- - - - -	4	
-3	A8944-632-24J	Nut (Tinnerman)- - - - -	4	
-4	801010-501	Cluster Assy - - - - -	1	
-5	801014-1	Faceplate- - - - -	1	
-6	AN526-832R8	Screw- - - - -	2	
-7	MS20364-832	Nut- - - - -	2	
-8	801012-1	Tachometer - - - - -	1	
-9	AN515B6R5	Screw- - - - -	4	
-10	10-357290-1	Switch (Bendix)- - - - -	1	
-11	C2300	Compass Assy (Airpath) - - - - -	1	
-12	901040-1	Compass Card Holder- - - - -	1	
	C23-806	Deviation Card Window (Airpath)- - - - -	1	
	C23-807	Deviation Card (Airpath) - - - - -	1	
	AES1021Z4-6	Screw- - - - -	1	
-13	402011-1	Spare Fuse Holder- - - - -	1	
-14	MDL5	Fuse (Buss)- - - - -	2	
-15	AGC10	Fuse (Buss)- - - - -	3	
-16	AGC15	Fuse (Buss)- - - - -	3	
-17	AGC2	Fuse (Buss)- - - - -	1	
-18	HKP	Fuse Holder (Buss) - - - - -	3	
-19	700-223	Altimeter (Karnish)- - - - -	1	
-20	AN515B6R12	Screw- - - - -	3	
-21	A8944-632-24J	Nut (Tinnerman)- - - - -	3	
-22	109-240-101	Circuit Breaker (Wood Electric Company)- - - - -	1	
-23	26-000-100	Switch (Chicago Switch)- - - - -	2	
-24	T1GK51-1S-RD-	Switch - - - - -	1	
	F			
-25	9279	Momentary Switch - - - - -	1	
-26	XR-6937	Rheostat (Memcor)- - - - -	1	
-27	116	Knob (Dimco) - - - - -	1	
	AN565D8H4	Setscrew - - - - -	1	
-28	K-2402-2	Fuel Primer- - - - -	1	
-29	507001-1	Mixture Control- - - - -	1	
-30	507002-1	Throttle Control - - - - -	1	
-31	507003-1	Carb Heat Control- - - - -	1	
-32	64-032-736	Parking Brake Control (Arens)- - - - -	1	
-33	64-032-736	Cabin Heat Control (Arens) - - - - -	1	
		INSTALLATION - OPTIONAL EQUIPMENT		
-34	W-33-7510-10	Clock- - - - -	1	
-35	AN515B6R-8	Screw- - - - -	2	

(Continued on next page)



FIGURE AND INDEX NO.	PART NUMBER	DESCRIPTION	UNITS PER ASSY	USABLE ON CODE
		1 2 3 4 5 6 7		
38-				
-36	12W2A2S	Turn & Bank Indicator (R. C. Allen)- - - - -	1	
-37	AN515B6R-12	Screw- - - - -	8	
-38	A8944-632-24J	Nut (Tinnerman)- - - - -	10	
-39	SP1403-1-AA	Vertical Speed Indicator (Stand.Precision) - -	1	
-40	RCA10J4980-04	Directional Gyro (R. C. Allen) - - - - -	1	
-41	RCA20K5750-01	Horizontal Gyro (R. C. Allen)- - - - -	1	
-42	AN515B632R5	Screw- - - - -	7	
-43	80103	Suction Gauge (MacLeod)- - - - -	1	
-44	M-5600	Hourmeter (Hobbs)- - - - -	1	
-45	200605	Housing Assy - Cigar Lighter (Casco) - - - - -	1	
-46	200100	Pop-Out Unit - Cigar Lighter (Casco) - - - - -	1	
-47	200402	Cord Assy (Casco)- - - - -	1	
-48	26-000-100	Switch (Chicago Switch)- - - - -	3	
-49	AGC2	Fuse (Buss)- - - - -	1	
-50	AGC10	Fuse (Buss)- - - - -	2	
-51	AGC15	Fuse (Buss)- - - - -	1	
-52	HKP	Fuse Holder (Buss) - - - - -	4	



ELECTRICAL SYSTEM

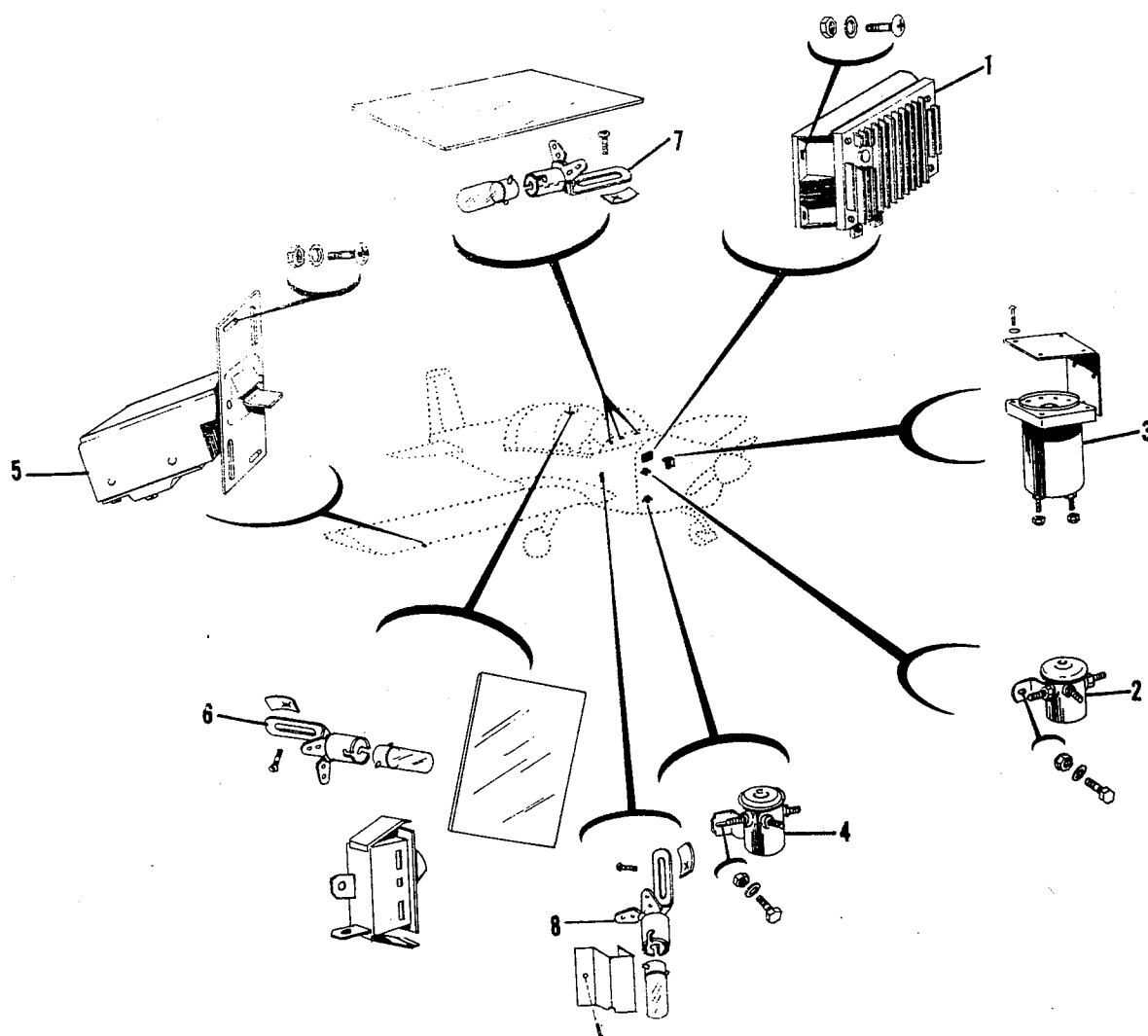


FIGURE 39. ELECTRICAL SYSTEM INSTALLATION



FIGURE AND INDEX NO.	PART NUMBER	DESCRIPTION	UNITS PER ASSY	USABLE ON CODE
		1 2 3 4 5 6 7		
39-		ELECTRICAL SYSTEM INSTL.		
-1	VSF-7202-1A	Voltage Regulator (Prestolite) - - - - -	1	
		Attaching Parts		
	AN526-832R8	Screw - - - - -	3	
	MS20365-832	Nut - - - - -	3	
	AN960-8	Washer - - - - -	3	
		- - - * - - -		
-2	SAW 4204	Starter Relay - - - - -	1	
		Attaching Parts		
	AN 3-10A	Bolt - - - - -	2	
	MS20364-1032	Nut - - - - -	2	
	AN960-10	Washer - - - - -	2	
		- - - * - - -		
-3	02062-2	Warning Unit (Safe Flight Instrument Corp) - - -	1	
		Attaching Parts		
	AN515B632RS	Screw - - - - -	4	
	1601-0410	Rivet - - - - -	3	
	402010-1	Bracket - - - - -	1	
		- - - * - - -		
-4	8781-2	Relay (RBM Controls) - - - - -	1	
		Attaching Parts		
	AN4-10A	Bolt - - - - -	2	
	MS20364-428	Nut - - - - -	2	
	AN960-416	Washer - - - - -	2	
		- - - * - - -		
-5	164-3	Lift Detector V-502 (Safe Flight Instrument Corp)	1	
		Attaching Parts		
	AES1021Z6-6	Screw - - - - -	2	
	A6014-6Z-1	Nut - - - - -	2	
-6	102354-501	Cabin Dome Light Instl. (Ref) - - - - -	1	
	26-000-100	Switch (Chicago Switch) - - - - -	1	
	102354-1	Lens - - - - -	1	
	1816	Bulb (Clear) (GE) - - - - -	1	
	7-06	Socket (Leecraft) - - - - -	1	
		Attaching Parts		
	AES1021Z6-6	Screw - - - - -	1	
	C8096-6-1	Nut (Tinnerman) - - - - -	1	
		- - - * - - -		

Continued on next page

Model AA1

Yankee

illustrated parts catalog



FIGURE AND INDEX NO.	PART NUMBER	DESCRIPTION	UNITS PER ASSY	USABLE ON CODE
		1 2 3 4 5 6 7		
-7	102338-7	Instrument Light Instl- - - - -	5	
	1816	Lens- - - - -	5	
	7-06	Bulb (Clear) (GE) - - - - -	5	
		Socket (Leecraft) - - - - -		
		Attaching Parts		
	AES1021Z6-6	Screw - - - - -	1	
	C8096-6-1	Nut (Tinnerman) - - - - -	1	
-8		- - - * - - -		
	102358-501	Fuel Manometer Light Instl (Ref)- - - - -		
	1816	Bulb (Clear) (GE) - - - - -	2	
	7-06	Socket (Leecraft) - - - - -	2	
		Attaching Parts		
	AN526-832R8	Screw - - - - -	1	
		- - - * - - -		
	102358-1	Shield (LH) - - - - -	1	
	102358-2	Shield (RH) - - - - -	1	
		Attaching Parts		
	AES1021Z6-6	Screw - - - - -	1	
		- - - * - - -		



PLACARD

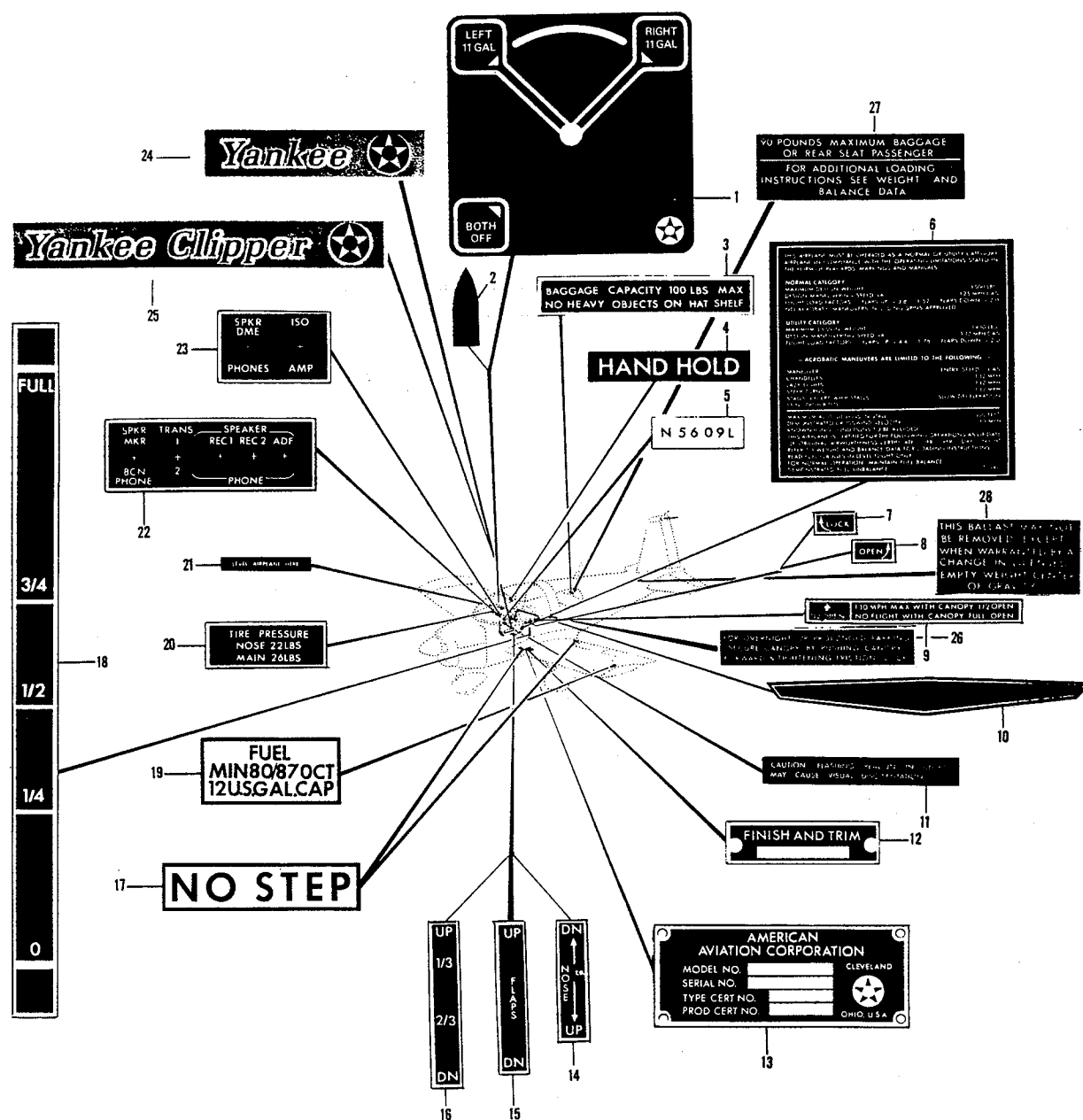


FIGURE 40. PLACARD INSTALLATION



FIGURE AND INDEX NO.	PART NUMBER	DESCRIPTION							UNITS PER ASSY	USABLE ON CODE
		1	2	3	4	5	6	7		
40-		PLACARD INSTALLATION							NP	
-1	803006-1	Placard Fuel Selector - - - - -							1	
-2	803007-19	Fuel Selector - - - - -							1	
-3	803007-7	Baggage - - - - -							1	
-4	803007-23	Hand Hold - - - - -							2	
-5	803007-1	Aircraft Identification - - - - -							1	
-6	803007-15	Operation Limitations - - - - -							1	
-7	803007-13	Canopy Lock - - - - -							1	
-8	803007-14	Canopy Open - - - - -							1	
-9	803007-3	Canopy Position - - - - -							1	
-10	803004-1	Insert Name Opt-2 Standard- - - - -							1	
-11	803007-20	Flashing Beacon - - - - -							1	
-12	803007-18	Finish and Trim - - - - -							1	
-13	803005-1	Name Plate- - - - -							1	
-14	803007-11	Trim- - - - -							1	
-15	803007-9	Flap Switch - - - - -							1	
-16	803007-10	Flap Position - - - - -							1	
-17	803007-4	No Step - - - - -							4	
-18	803007-8	Fuel Level- - - - -							2	
-19	903007-2	Fuel Capacity - - - - -							2	
-20	803007-5	Tire Pressure - - - - -							1	
-21	803007-21	Level - - - - -							1	
-22	803007-12	Audio Isolation Optional - - - - -							1	
-23	803007-22	Audio Isolation Optional - - - - -							1	
-24	803007-24	Yankee- - - - -							2	
-25	803007-25	Yankee Clipper Optional- - - - -							2	
-26	803007-30	Friction Lock - - - - -							2	
-27	803007-31	Load Instruction- - - - -							1	
-28	803007-32	Ballast Instruction - - - - -							1	



FLASHING BEACON

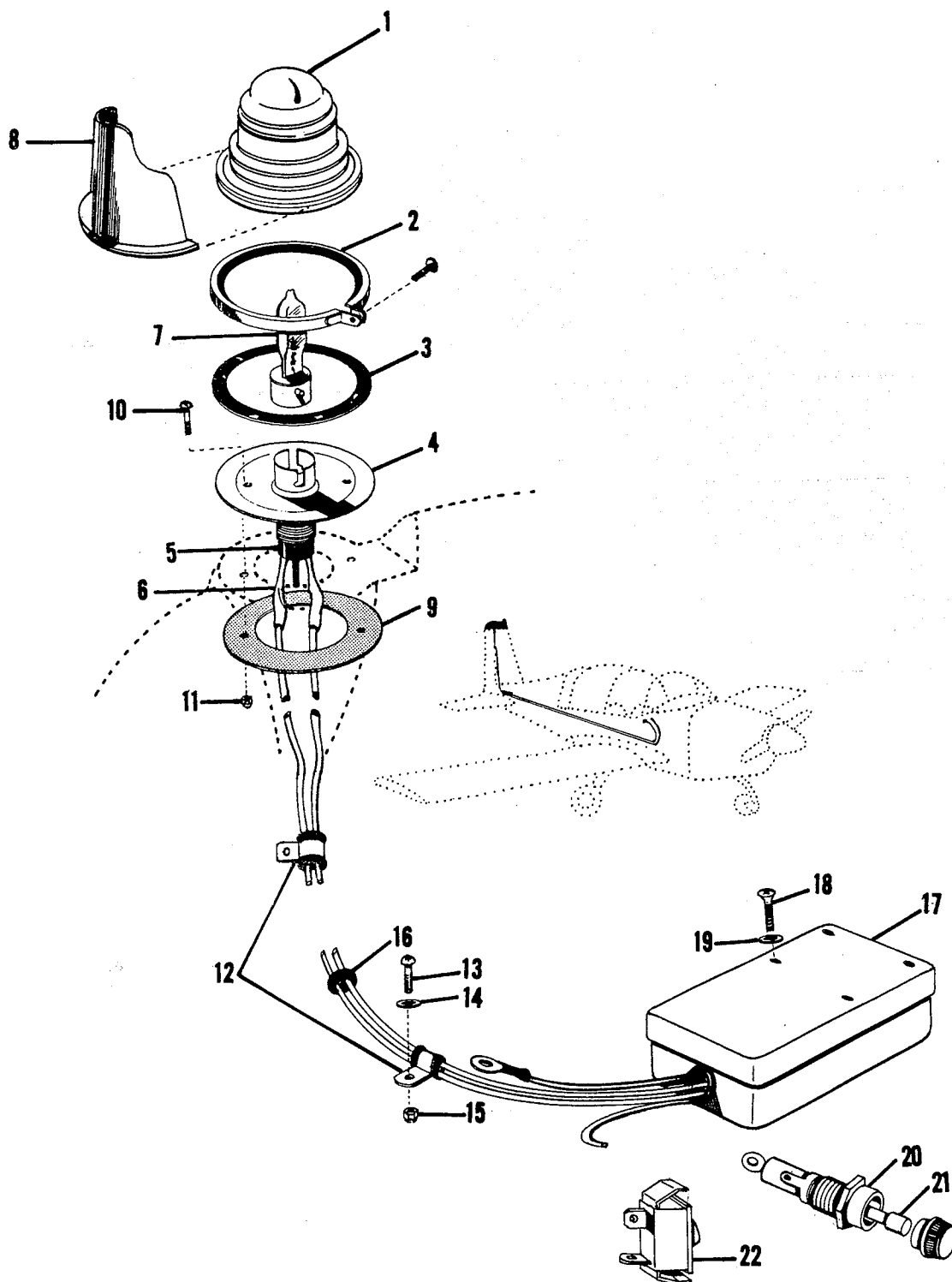


FIGURE 41: FLASHING BEACON INSTALLATION



FIGURE AND INDEX NO.	PART NUMBER	DESCRIPTION	UNITS PER ASSY	USABLE ON CODE
		1 2 3 4 5 6 7		
41		FLASHING BEACON INSTALLATION (Optional)		
	X1A	Light Ass'y - - - - -	1	
-1	111-3	Dome Red - Aero Flash Signal Corporation - - -	1	
-2	73-2	Clamp Ring Ass'y - Aero Flash Signal Corp	1	
-3	80-3	Gasket - Aero Flash Signal Corporation - - - -	1	
-4	101-9C	Mounting Plate - Aero Flash Signal Corporation	1	
-5	45-1	Socket - Aero Flash Signal Corporation - - - -	1	
-6	60-1	Heat Shrink Tube - Aero Flash Signal Corp. - -	2	
-7	40-5A	Lamp - Aero Flash Signal Corporation - - - -	1	
-8	804001-1	Shield - - - - -	1	
-9	804001-2	Plate - - - - -	1	
		Attaching Parts		
-10	AN526-832R8	Screw - - - - -	2	
-11	MS20364-832	Nut - - - - -	2	
-12	MS21919-DG3	Clamp - - - - -	2	
-13	AN526-832R6	Screw - - - - -	2	
-14	AN960-8	Washer - - - - -	2	
-15	MS20364-832	Nut - - - - -	2	
-16	MS35489-4	Grommet - - - - -	1	
		- - * - -		
-17	SID	Flasher Unit - Aero Flash Signal Corporation -	1	
		Attaching Parts		
-18	AN526-832R8	Screw - - - - -	4	
-19	AN960-8	Washer - - - - -	4	
		- - * - -		
-20	HKP	Fuse Holder - Buss - - - - -	1	
-21	AGC-15	Fuse - Buss - - - - -	1	
-22	26-000-100	Switch - Chicago Switch - - - - -	1	



INSTRUMENT CLUSTER

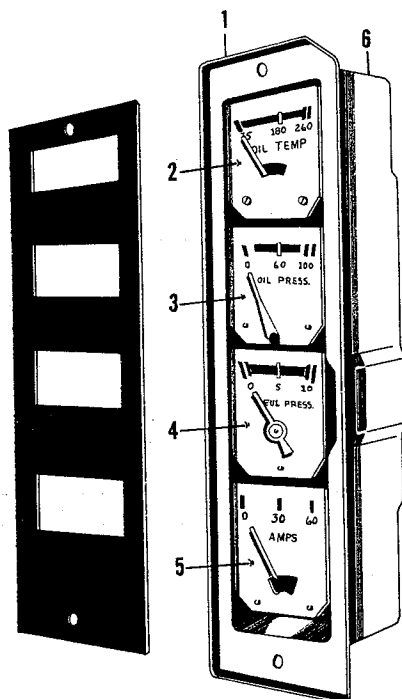


FIGURE 42. INSTRUMENT CLUSTER ASSY

FIGURE AND INDEX NO.	PART NUMBER	DESCRIPTION						UNITS PER ASSY	USABLE ON CODE
		1	2	3	4	5	6		
42-		INSTRUMENT CLUSTER ASSY							
-1	801010-501	Instrument Cluster Assy- - - - -						1	
-2	442799-P	Oil Temp Gage (Stewart Warner)- - - - -						1	
		Attaching Hardware							
	AN960-10L	Washer - - - - -						2	
	AN341-10	Nut- - - - -						4	
	AN935-10L	Washer - - - - -						4	
-3	444646-P	Oil Pressure Gage (Stewart Warner)- - - - -						1	
		Attaching Hardware							
		- - - * - - -							
	AC356-720	Nut (Palnut Co.)- - - - -						1	
-4	444616-P	Fuel Pressure Gage (Stewart Warner) - - - - -						1	
		Attaching Hardware							
		- - - * - - -							
	AC356-720	Nut (Palnut Co.)- - - - -						1	
-5	440441-P	Ammeter (Stewart Warner) - - - - -						1	
		Attaching Hardware							
		- - - * - - -							
	AN935-10L	Washer - - - - -						4	
	AN341-10	Nut- - - - -						4	
	AN960-10L	Washer - - - - -						2	
-6	801015-501	Case Assy - Instrument Cluster - - - - -						1	



UPHOLSTERY AND INSULATION

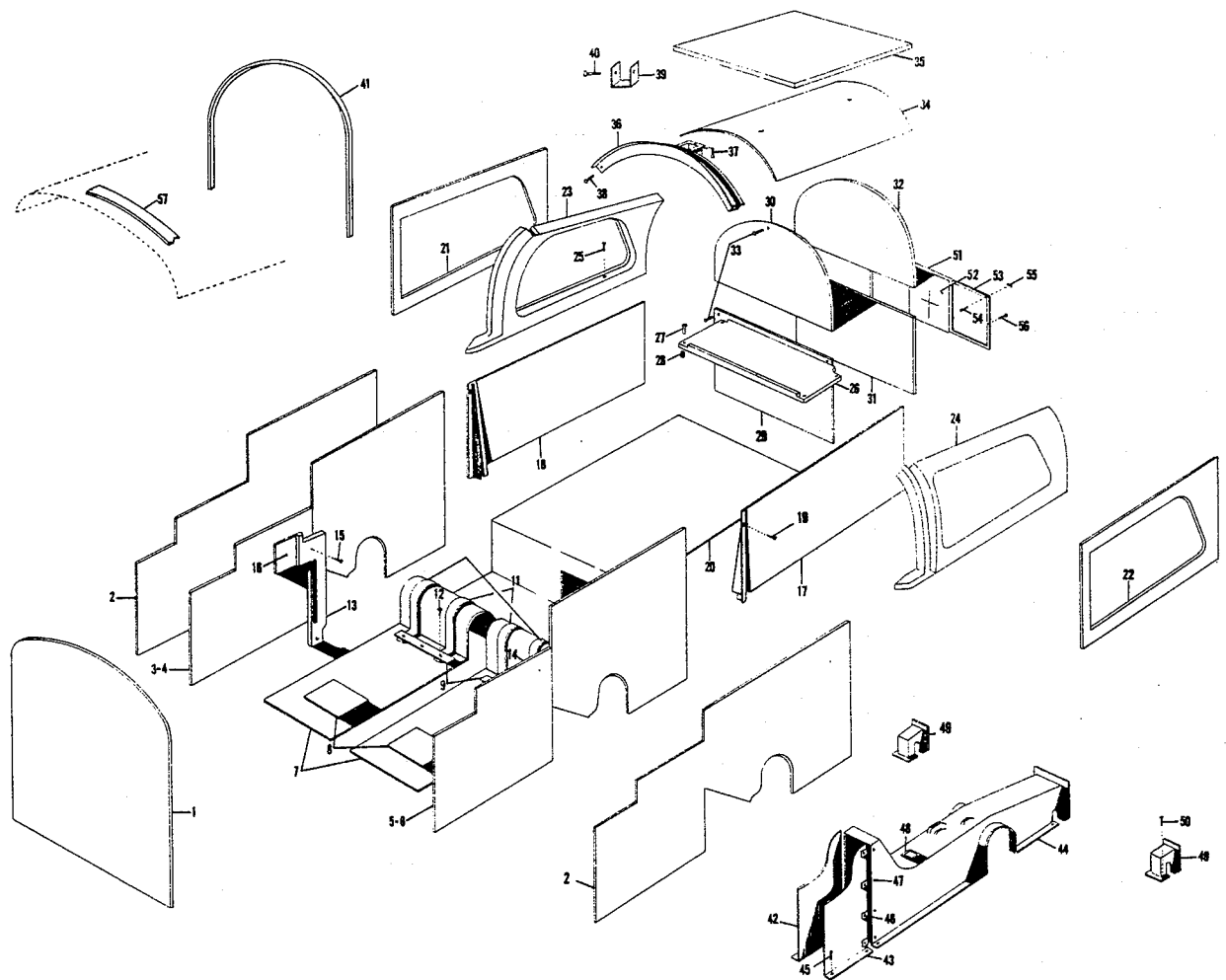


FIGURE 43. UPHOLSTERY INSTALLATION AND INSULATION



FIGURE AND INDEX NO.	PART NUMBER	DESCRIPTION	UNITS PER ASSY	USABLE ON CODE
		1 2 3 4 5 6 7		
43-		UPHOLSTERY INSTALLATION & INSULATION		
	102344-501	Upholstery Installation (Standard) - - - - -		
	102344-502	Upholstery Installation (Optional) - - - - -		
	102344-503	Insulation Installation- - - - -	2	
-1	102344-1	Insulation Firewall- - - - -	1	
-2	102344-3	Insulation - - - - -	2	
-3	102343-2 RH	Panel Trim -(Standard) - - - - -	1	
-4	102343-4 RH	Panel Trim -(Optional) - - - - -	1	
-5	102343-1 LH	Panel Trim -(Standard) - - - - -	1	
-6	102343-3 LH	Panel Trim -(Optional) - - - - -	1	
-7	102344-26	Floor Covering - - - - -	1	
-8	102344-25	Scuff Plate- - - - -	2	
-9	102344-34	Strip- - - - -	2	
-10	102344-36 LH	Strap- - - - -	2	
-11	102344-37 RH	Strap- - - - -	2	
		Attaching Parts		
-12	AES1021A6-8	Screw- - - - -	22	
		- - - * - - -		
-13	102338-502 RH	Moulding - - - - -	1	
-14	102338-503 LH	Moulding - - - - -	1	
		Attaching Parts		
-15	AES1021A6-8	Screw- - - - -	6	
-16	AES1021A4-6	Screw- - - - -	2	
-17	102344-17	Panel Trim LH- - - - -	1	
-18	102344-18	Panel Trim RH- - - - -	1	
		Attaching Parts		
-19	AES1021A4-10	Screw- - - - -	6	
		- - - * - - -		
-20	102344-24	Floor Covering Baggage - - - - -	1	
-21	102344-4	Insulation Window RH - - - - -	1	
-22	102344-4	Insulation Window RH - - - - -	1	
-23	102344-20	Moulding Window RH - - - - -	1	
-24	102344-19	Moulding Window LH - - - - -	1	
		Attaching Parts		
-25	AES1021A4-6	Screw- - - - -	16	
		- - - * - - -		
-26	102345	Shelf Assy- - - - -	1	
		Attaching Parts		
-27	H323-4-1-2	Plunger - - - - -	4	
-28	H559-4-2	Grommet - - - - -	4	
		- - - * - - -		
-29	102344-23	Baggage Lower - - - - -	1	
-30	102344-22	Baggage Upper - - - - -	1	
-31	102344-7	Insulation - Baggage Lower- - - - -	1	
-32	102344-6	Insulation - Baggage Upper- - - - -	1	
		(Continued on next page.)		



FIGURE AND INDEX NO.	PART NUMBER	DESCRIPTION							UNITS PER ASSY	USABLE ON CODE
		1	2	3	4	5	6	7		
		Attaching Parts								
-33	AES1021A4-6	Screw	-	-	-	-	-	-	7	
		- - - *	-	-	-	-	-	-		
-34	102344-24	Headliner	-	-	-	-	-	-	1	
-35	102344-25	Insulation-	-	-	-	-	-	-	1	
-36	102344-21	Moulding - Cabin Top-	-	-	-	-	-	-	1	
		Attaching Parts	-	-	-	-	-	-	1	
-37	AES1021A6-8	Screw	-	-	-	-	-	-	2	
-38	AES1021A4-6	Screw	-	-	-	-	-	-	4	
		- - - *	-	-	-	-	-	-		
-39	902020-1	Bracket	-	-	-	-	-	-	2	
		Attaching Parts	-	-	-	-	-	-		
-40	AES1021A4-6	Screw	-	-	-	-	-	-	4	
		- - - *	-	-	-	-	-	-		
-41	102344-29	Seal-	-	-	-	-	-	-	1	
-42	102344-31	Console Fwd RH-	-	-	-	-	-	-	1	
-43	102344-30	Console Fwd LH-	-	-	-	-	-	-	1	
-44	102344-28	Console Aft	-	-	-	-	-	-	1	
		Attaching Part	-	-	-	-	-	-		
-45	AES1021A6-8	Screw	-	-	-	-	-	-	8	
-46	A6014-6Z-1	Tinnerman Nut	-	-	-	-	-	-	8	
-47	AES1021Z6-8	Screw	-	-	-	-	-	-	8	
-48	S-16-AR-RT-CC	Ash Tray-	-	-	-	-	-	-	1	
		- - - *	-	-	-	-	-	-		
-49	102344-15	Boot-	-	-	-	-	-	-	2	
		Attaching Part	-	-	-	-	-	-		
-50	AES1021A4-6	Screw	-	-	-	-	-	-	8	
		- - - *	-	-	-	-	-	-		
-51	102344-33	Panel	-	-	-	-	-	-	1	
		SA Part	-	-	-	-	-	-		
-52	102344-32	Seal-	-	-	-	-	-	-	1	
-53	Y9132B	Tape-	-	-	-	-	-	-		
-54	AES1021Z6-8	Screw	-	-	-	-	-	-	5	
-55	A1181-6Z-1	Nut	-	-	-	-	-	-	5	
-56	AES1021A6-8	Screw	-	-	-	-	-	-	2	
-57	102344-2	Insulation Cowl Deck-	-	-	-	-	-	-	1	



HEATED PITOT TUBE

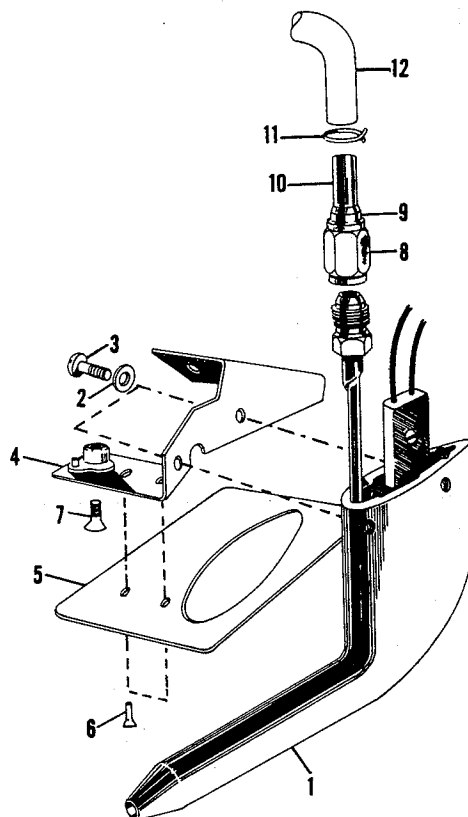


FIGURE 44: HEATED PITOT TUBE INSTALLATION

FIGURE AND INDEX NO.	PART NUMBER	DESCRIPTION							UNITS PER ASSY	USABLE ON CODE
		1	2	3	4	5	6	7		
44-		HEATED PITOT INSTALLATION							NP	
	804007-501	Heated Pitot Installation - - - - -							NP	
-1	P. H. 502-12	Heated Pitot Tube (Aero Inst. Co.)- - - - -							1	
-2	AN935-6	Washer- - - - -							2	
-3	AN520-6-2	Screw - - - - -							2	
-4	804008-501	Bracket Assy. Pitot Mounting- - - - -							1	
		Attaching Parts								
-5	804407-3	Cover - - - - -							1	A
	804407-4	Cover - - - - -							1	B
-6	1604-0412	Rivet (Avex)- - - - -							2	
-7	MS24694-S48	Screw - - - - -							1	
		- - - *								
-8	AN818-4D	Nut - - - - -							1	
-9	MS20819-4D	Sleeve- - - - -							1	
-10	804007-1	Tube- - - - -							1	
-11	A-6	Hose Clamp (Corbin) - - - - -							2	
-12	804007-2	Tubing PVC Clear- - - - -							A/R	
		(A - - AA-1 Serial 0001 - 0014)								
		(B - - AA-1 Serial 0015 & up)								



GLOVE BOX AND DOOR

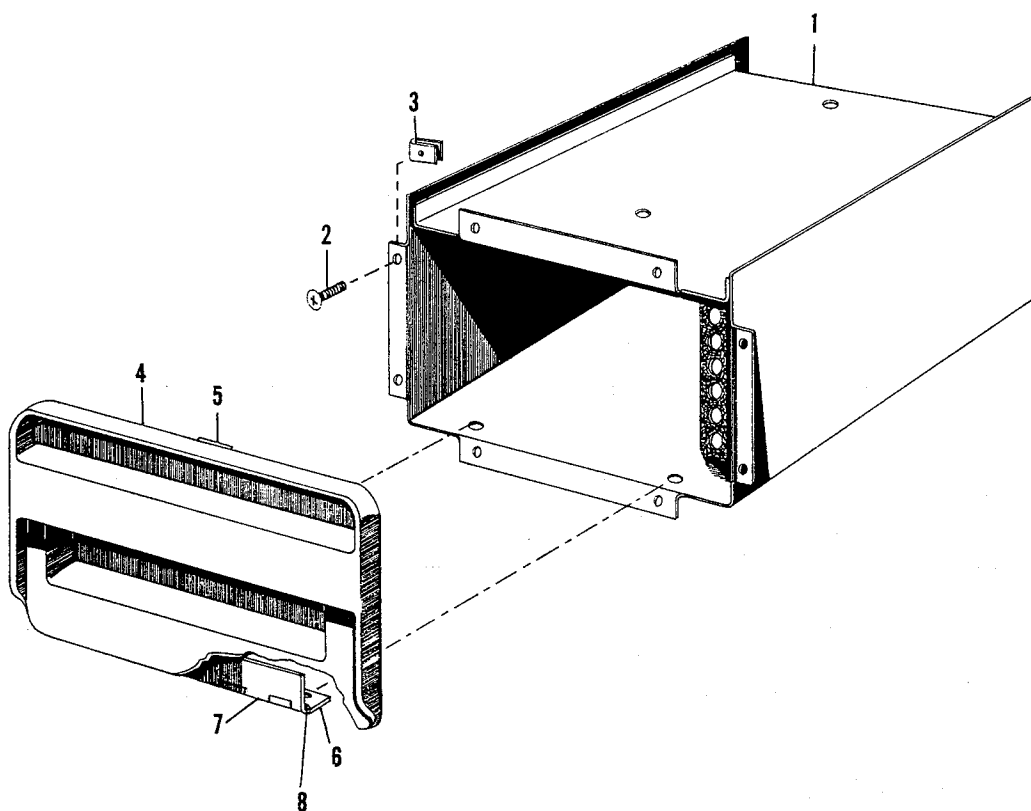


FIGURE 45. GLOVE BOX AND DOOR INSTALLATION

FIGURE AND INDEX NO.	PART NUMBER	DESCRIPTION	UNITS PER ASSY	USABLE ON CODE
45-		GLOVE BOX AND DOOR INSTALLATION		
-1	102318-501	Glove Box Assy- - - - -	1	
		Attaching Parts		
-2	AES1021Z4-6	Screw - - - - -	10	
-3	A1776-4Z-1	Nut - - - - -	10	
		- - - * - - -		
	102360	Door Assy - - - - -	1	
		Attaching Parts		
-4	102360-1	Door- - - - -	1	
-5	102360-2	Latch - - - - -	1	
-6	102360-3	Half Hinge- - - - -	1	
-7	102360-4	Half Hinge- - - - -	1	
-8	102360-5	Pin - - - - -	1	
		- - - * - - -		



INSTRUMENT PANEL

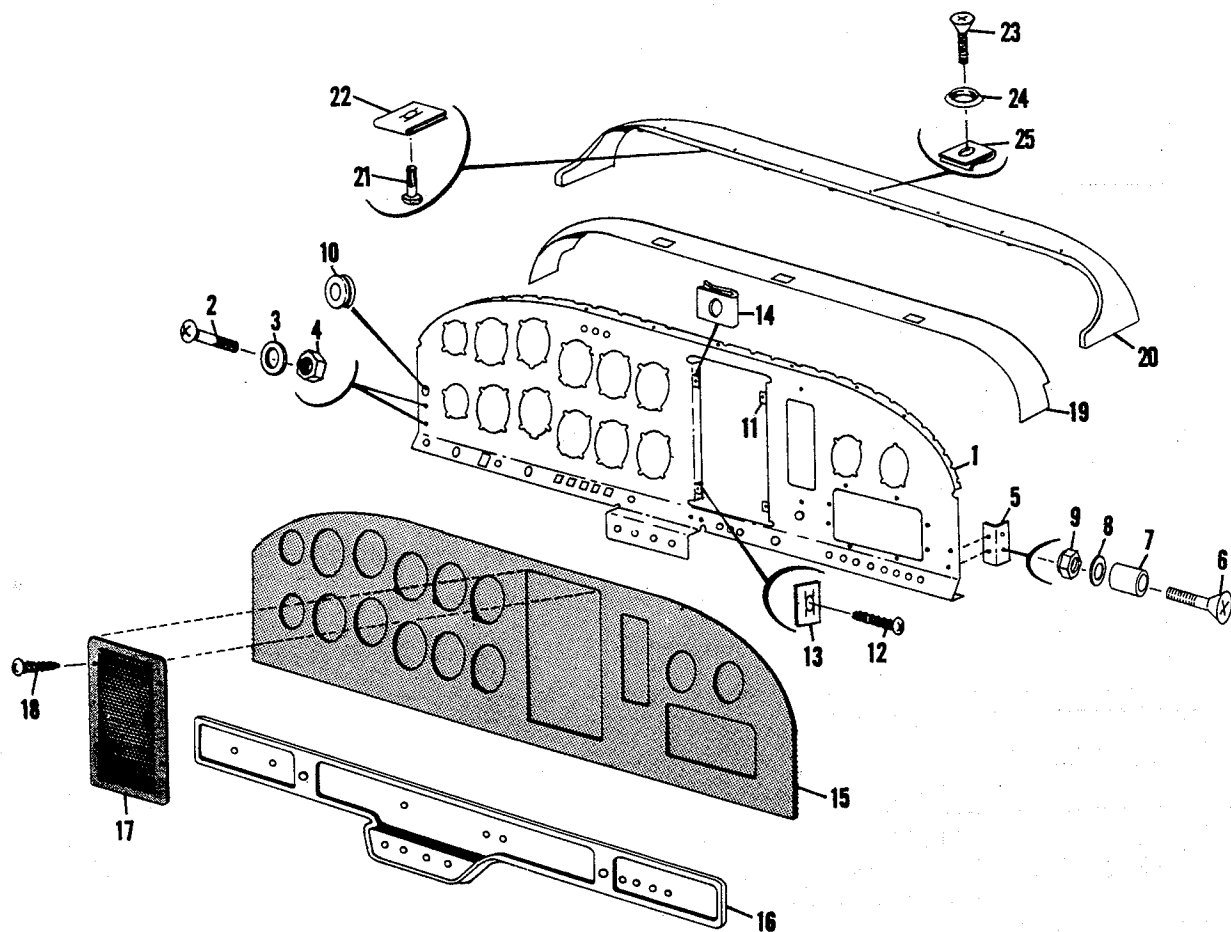


FIGURE 46: INSTRUMENT PANEL INSTALLATION



FIGURE AND INDEX NO.	PART NUMBER	DESCRIPTION							UNITS PER ASSY	USABLE ON CODE
		1	2	3	4	5	6	7		
46		INSTRUMENT PANEL INSTALLATION							NP	
-1	102312-1	Instrument Panel- - - - -							1	
		Attaching Parts								
-2	NAS220-8	Screw - - - - -							4	
-3	AN960-8	Washer- - - - -							4	
-4	MS20364-832	Nut - - - - -							4	
		- - - * - - -								
-5	102328-1	Bracket - - - - -							2	
		Attaching Parts								
-6	MS24694-S58	Screw - - - - -							4	
-7	55021-3-47	Sleeve- - - - -							4	
-8	AN960-10	Washer- - - - -							4	
-9	MS20364-1032	Nut - - - - -							4	
		- - - * - - -								
-10	MS35490-6	Grommet - - - - -							1	
-11	102314-2	Bracket - - - - -							4	
-12	AES1021Z6-6B	Screw - - - - -							4	
-13	Al181-6Z-1	Nut (Tinnerman) - - - - -							4	
-14	NAS395-4-1	Nut (Tinnerman) - - - - -							4	
-15	102340-1	Panel Cover - - - - -							1	
-16	102315-501	Cover Assy. - - - - -							1	
	102315-502	Cover Assy. (Optional)- - - - -							1	
-17	102329-1	Closure - - - - -							1	
-18	AES1021Z6-6B	Screw - - - - -							4	
	102338-501	Glareshield Assy. - - - - -							1	
-19	102338-4	Glareshield - - - - -							1	
-20	102338-1	Glareshield - - - - -							1	
		Attaching Parts								
-21	AES1026-8B	Screw - - - - -							6	
-22	ANS395-4	Nut (Tinnerman) - - - - -							6	
-23	NAS385-6-10	Screw - - - - -							6	
-24	NAS391-6	Washer- - - - -							6	
-25	NAS395-4-1	Nut (Tinnerman) - - - - -							6	
		- - - * - - -								



EXTERIOR TRIM KIT

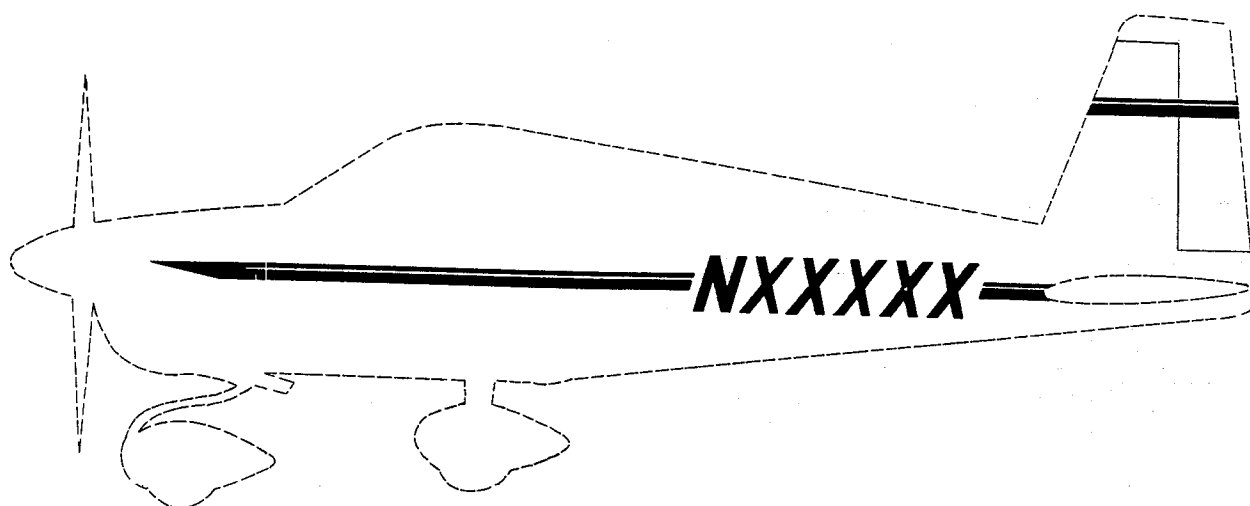


FIGURE 47: EXTERIOR STYLING AND MARKINGS

FIGURE AND INDEX NO.	PART NUMBER	DESCRIPTION										UNITS PER ASSY	USABLE ON CODE
		1	2	3	4	5	6	7					
47	000003	EXTERIOR STYLING AND MARKINGS											
	000003-1	Exterior Trim Kit										1	
	000003-1	Red - - - - -										1	
	000003-1	White - - - - -										1	
	000003-1	Brown - - - - -										1	
	000003-1	Black - - - - -										1	
		NOTE: When ordering, state serial number of aircraft.											



FIRE EXTINGUISHER

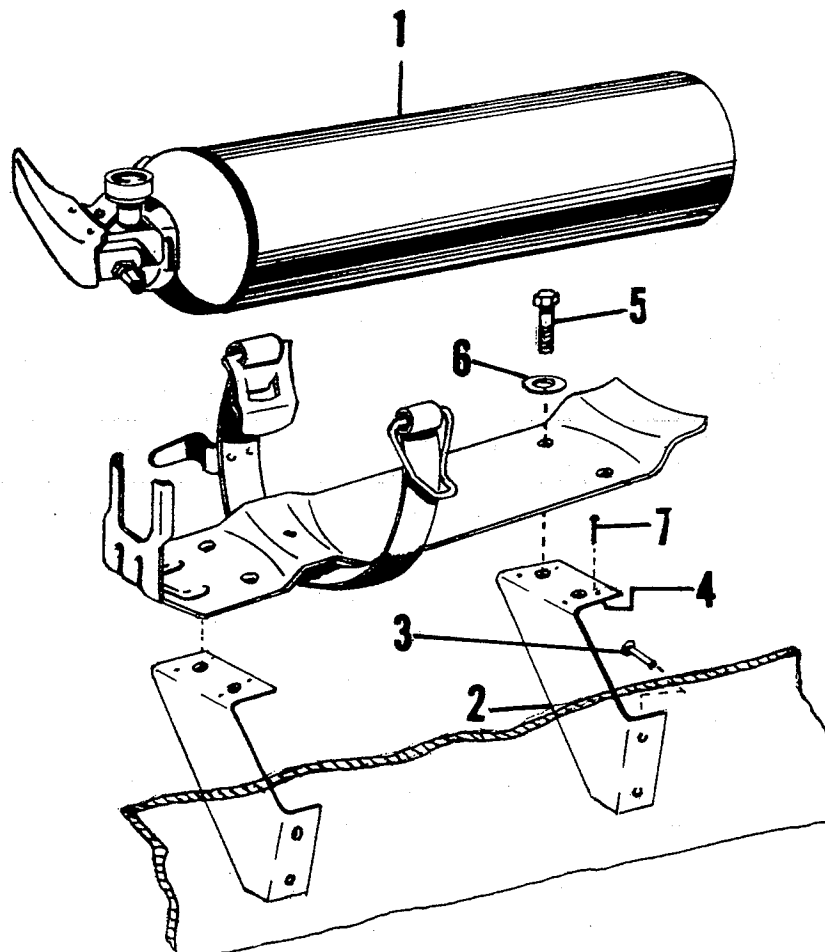


FIGURE 48: FIRE EXTINGUISHER INSTL.

FIGURE AND INDEX NO.	PART NUMBER	DESCRIPTION							UNITS PER ASSY	USABLE ON CODE
		1	2	3	4	5	6	7		
48		FIRE EXTINGUISHER INSTL. & SUPPORT ASSY (OPTIONAL)							NP	
	804025-501	Fire Extinguisher Instl.- - - - -							NP	
-1	CP-2 3/4	Fire Extinguisher - - - - -							1	
	804024-501	Support Assy- - - - -							2	
		Attaching Parts								
-2	804024-1	Bracket - - - - -							2	
-3	1601-0410	Rivet (Avex)- - - - -							6	
-4	NAS680A31C	Nutplate- - - - -							2	
-5	AN3-5A	Bolt- - - - -							4	
-6	AN960-10	Washer- - - - -							4	
-7	1204-0306	Rivet (Avex)- - - - -							4	



AIR TEMPERATURE GAUGE

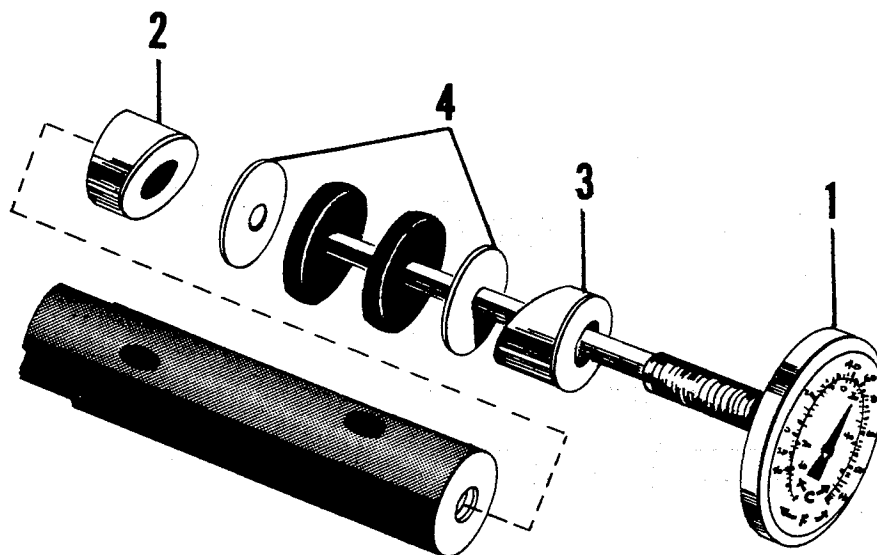


FIGURE 49: AIR TEMPERATURE GAUGE INSTL

FIGURE AND INDEX NO.	PART NUMBER	DESCRIPTION							UNITS PER ASSY	USABLE ON CODE
		1	2	3	4	5	6	7		
49		AIR TEMPERATURE GAUGE INSTL. (OPTIONAL)							NP	
	804006-501	Air Temperature Gauge Instl. - - - - -							NP	
-1	2716	Air Temperature Gauge (Scott) - - - - -							1	
-2	804006-1	Tube - - - - -							1	
-3	804006-2	Tube - - - - -							1	
-4	901050-1	Washer - - - - -							2	



SUN SCREEN

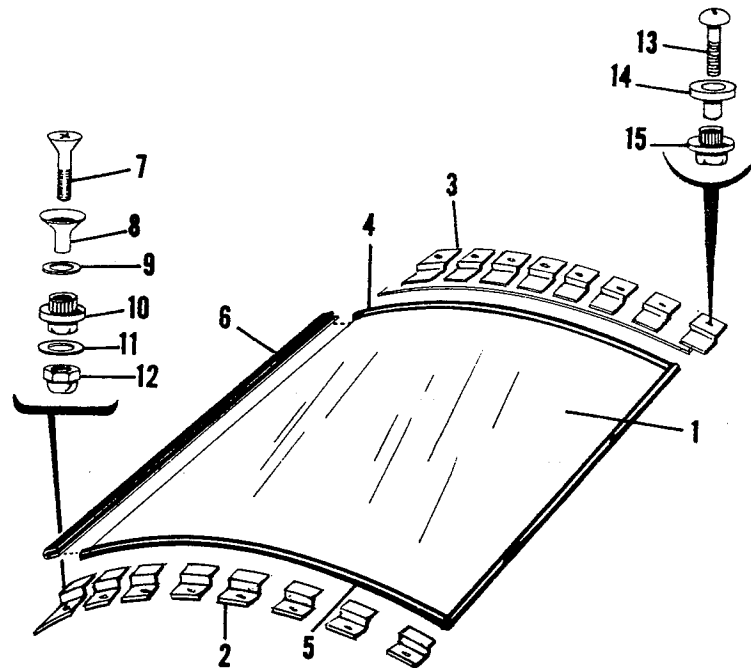


FIGURE 50: SUN SCREEN ASSEMBLY

FIGURE AND INDEX NO.	PART NUMBER	DESCRIPTION							UNITS PER ASSY	USABLE ON CODE
		1	2	3	4	5	6	7		
50		SUN SCREEN ASSY AND INSTL. (OPTIONAL)								
	804026-501	Sun Screen Instl.	-	-	-	-	-	-	-	NP
	804026-502	Sun Screen Assy	-	-	-	-	-	-	-	1
-1	804026-1	Sun Screen-	-	-	-	-	-	-	-	1
-2	804026-2	Clip-	-	-	-	-	-	-	-	8
-3	804026-3	Clip-	-	-	-	-	-	-	-	8
-4	AES404-1-									
	30.0	Seal-Aft.	-	-	-	-	-	-	-	1
-5	AES404-1-									
	30.1	Seal-Fwd.	-	-	-	-	-	-	-	1
-6	AES404-1-									
	33.8	Seal-Side	-	-	-	-	-	-	-	2
-7	MS24693-553	Screw	-	-	-	-	-	-	-	8
-8	A-1165	Eyelet (Stimpson)	-	-	-	-	-	-	-	8
-9	A3135-017-4	Washer (Tinnerman)	-	-	-	-	-	-	-	8
-10	22ND8-82	Nut Spline (ESNA)	-	-	-	-	-	-	-	8
-11	AN960-8	Washer-	-	-	-	-	-	-	-	8
-12	MS20365-832	Nut	-	-	-	-	-	-	-	8
-13	AN526-1032									
	R10	Screw	-	-	-	-	-	-	-	6
-14	A1717	Eyelet (Stimpson)	-	-	-	-	-	-	-	6
-15	22ND8-02	Nut Spline (ESNA)	-	-	-	-	-	-	-	6



OPTIONAL EQUIPMENT

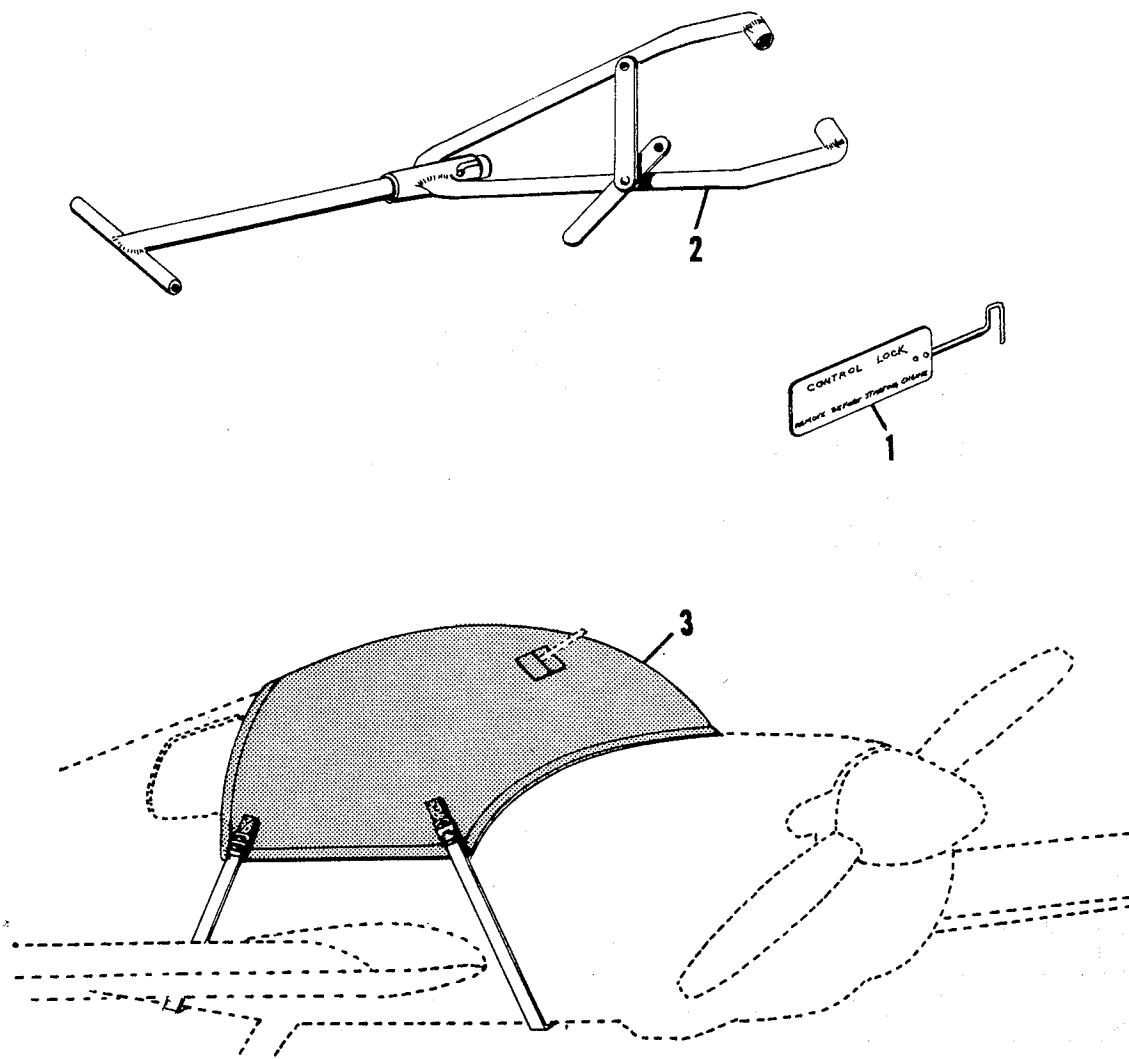


FIGURE 51: OPTIONAL EQUIPMENT

FIGURE AND INDEX NO.	PART NUMBER	DESCRIPTION							UNITS PER ASSY	USABLE ON CODE
		1	2	3	4	5	6	7		
51		OPTIONAL EQUIPMENT								
-1	602111	Control Lock	-	-	-	-	-	-	1	
-2	804022-501	Tow Bar	-	-	-	-	-	-	1	
-3	804031	Canopy Cover (Nuckley Inc.)	-	-	-	-	-	-	1	



CHILD'S SEAT

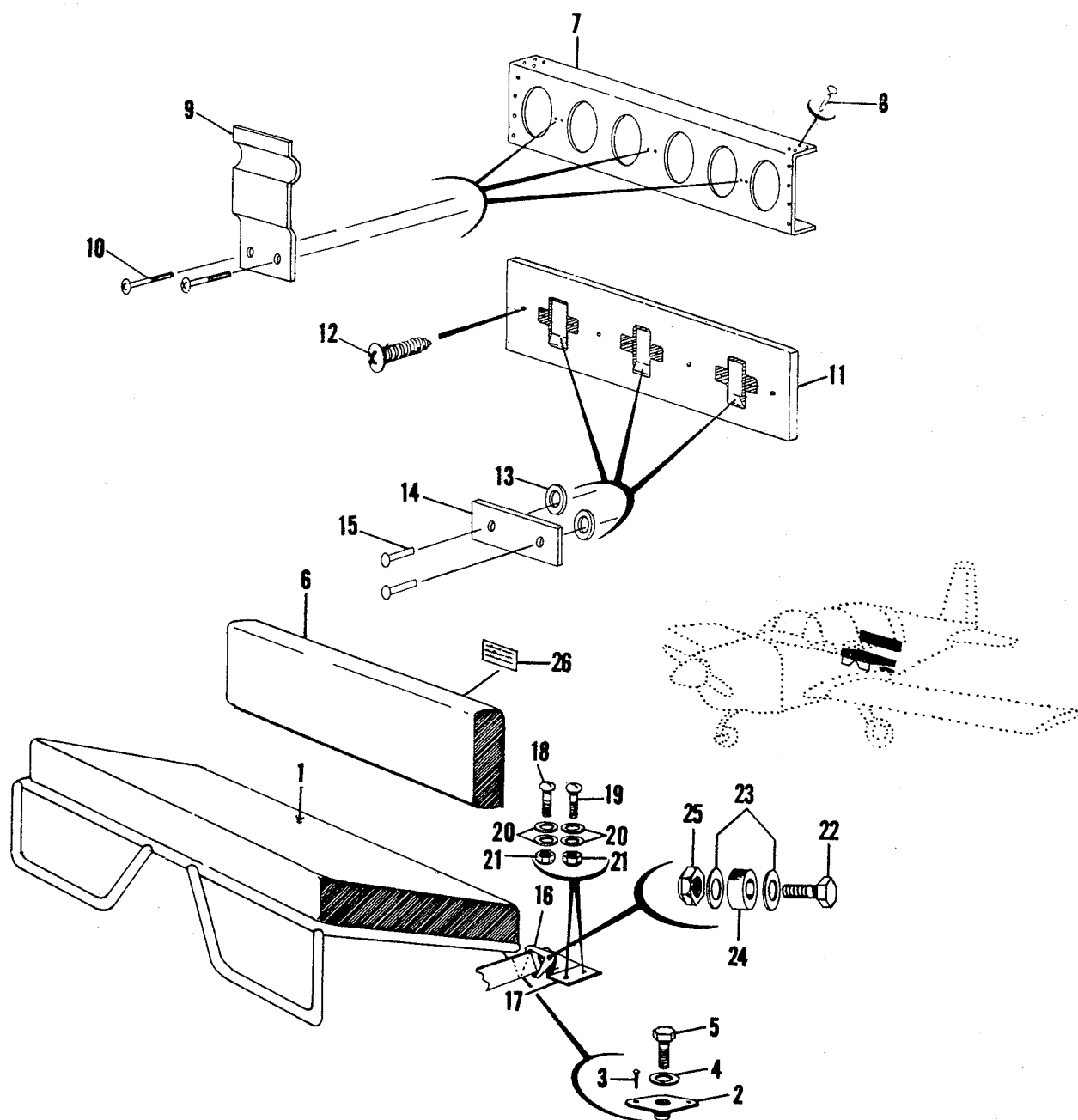


FIGURE 52 : CHILD'S SEAT ASSEMBLY & INSTL.

Model A A1

Yankee

illustrated parts catalog



FIGURE AND INDEX NO.	PART NUMBER	DESCRIPTION 1 2 3 4 5 6 7	UNITS PER ASSY	USABLE ON CODE
52		CHILD'S SEAT ASSEMBLY AND INSTALLATION	NP	
	804029-501	Child's Seat Assy. - - - - -	1	
-1	804028	Seat - - - - -	1	
		Attaching Parts		
-2	NAS680-A4	Nutplate - - - - -	2	
-3	MS20470A3-4	Rivet- - - - -	4	
-4	AN960-416L	Washer - - - - -	2	
-5	AN4-6	Bolt - - - - -	2	
		- - - * - - -		
-6	804029-501	Seat Back Assy.- - - - -	1	
		Attaching Parts		
-7	102367-1	Stiffener- - - - -	1	
-8	1601-0410	Rivet- - - - -	16	
-9	804029-6	Bracket- - - - -	3	
-10	AN526-832-R6	Screw- - - - -	6	
		- - - * - - -		
-11	804029-501	Seat (Back)- - - - -	1	
-12	AN960-4	Washer - - - - -	6	
-14	804029-5	Mounting Plate - - - - -	3	
-15	1060-4012	Rivet- - - - -	6	
-16	B-36T-21			
	Model 9600-3	Seat Belt Assy.- - - - -	1	
		Attaching Parts		
-17	804032-1	Bracket (LH) - - - - -	1	
	804032-2	Bracket (RH) - - - - -	1	
-18	MS27039-1-11	Screw- - - - -	1	
-19	MS27039-1-09	Screw- - - - -	4	
-20	AN960-10	Washer - - - - -	2	
-21	MS20364-1032	Nut- - - - -		
		- - - * - - -		
-22	AN3-6A	Bolt - - - - -	1	
-23	AN960-10	Washer - - - - -	2	
-24	902017-5	Bushing- - - - -	1	
-25	MS20364-1032	Nut- - - - -	1	
-26	803007-31	Placard- - - - -		



NUMERICA



INDEX



PARTS LIST

<u>PART NUMBER</u>	<u>FIGURE NUMBER</u>	<u>PART NUMBER</u>	<u>FIGURE NUMBER</u>
A-061-A	34A	AES1021Z6-8C	6
A-087-A	34A	AES1021Z8-10	6
A-088-A	34A	AES1021Z8-10B	6
A-089-A	34A	AES1021Z8-6	6
A-10	1	AES1022Z6-6	8
A-10	36	AES1022Z6-6	27
A-113-A	34A	AES1022Z6-6	29
A-1181-6Z-1	26A	AES1026-8B	1
A-1181-6Z-1	27	AES1026-8B	46
A-1181-6Z-1	43	AES1300	6
A-1181-6Z-1	46	AES200-1	9
A-1181-6Z-1	6	AES200-1	16
A-126-A	34A	AES200-1	18
A-1280-2	2	AES200-1	20
A-1280-3	2	AES200-1	22
A-14	36	AES201-1	1
A-147-A	34A	AES201-1	3
A-148-A	34A	AES201-1	9
A-2064-A-1777	8	AES201-1	17
A-2108-A	8	AES300	1
A-2109-3	8	AES301-1	1
A-223-A	34A	AES403-1	3
A-279-A	34A	AES403-1	6
A-331-A	34A	AES404-1-24	3
A-3510	8	AES404-1-30.0	50
A-4513-1	8	AES404-1-30.1	50
A-468-A	34A	AES404-1-33.8	50
A-6	29	AES408	6
A-6	35	AGC10	38
A-6	44	AGC15	38
AB960-616	10	AGC15	41
AC356-720	42	AGC2	38
AES1021A4-10	43	AN173-30A	2
AES1021A4-6	43	AN174-15A	4
AES1021A6-4	1	AN174-15A	17
AES1021A6-6	3	AN174-17A	5
AES1021A6-8	1	AN176-10A	2
AES1021A6-8	43	AN176-7A	11
AES1021A8-6	11	AN23-1	16
AES1021Z4-6	38	AN23-10	4
AES1021Z4-6	45	AN23-10	17
AES1021Z4-8	8	AN23-10	22
AES1021Z6-6	4	AN23-11	17
AES1021Z6-6	5	AN23-11	18
AES1021Z6-6	39	AN23-11	19
AES1021Z6-6B	46	AN23-11	20
AES1021Z6-6B	1	AN23-12	19
AES1021Z6-8	26A	AN23-12A	23
AES1021Z6-8	43	AN23-12A	24



PARTS LIST

<u>PART NUMBER</u>	<u>FIGURE NUMBER</u>	<u>PART NUMBER</u>	<u>FIGURE NUMBER</u>
AN23-13	16	AN316-4R	17
AN23-13	21	AN316-4R	22
AN23-21A	9	AN316-4R	21
AN23-8	4	AN316-6	33
AN23-8	23	AN320-10	11
AN23-8	24	AN320-10L	20
AN24-15	17	AN320-13	21
AN3-10A	1	AN320-3	16
AN3-10A	3	AN320-3	17
AN3-10A	17	AN320-3	18
AN3-10A	22	AN320-3	19
AN3-10A	32	AN320-3	20
AN3-10A	39	AN320-3	22
AN3-11A	9	AN320-3	26A
AN3-12A	22	AN320-3	36
AN3-12A	37	AN320-4	17
AN3-13A	1	AN341-10	6
AN3-15A	4	AN341-10	42
AN3-16	23	AN364-1032	11
AN3-3A	11	AN364-1032	22
AN3-4	24	AN364-1032	32
AN3-4A	3	AN364-428	11
AN3-4A	9	AN364-524	18
AN3-4A	17	AN364-524	21
AN3-5A	2	AN364-720	11
AN3-5A	4	AN365-1032	18
AN3-5A	6	AN365-1032	20
AN3-5A	14	AN365-1032	22
AN3-5A	17	AN365-1032	24
AN3-5A	24	AN365-1032	36
AN3-5A	29	AN365-428	13
AN3-5A	34A	AN365-428	18
AN3-5A	48	AN365-428	20
AN3-6A	5	AN365-428	21
AN3-6A	29	AN365-524	10A
AN3-6A	52	AN365-624	10
AN3-7A	2	AN365-624	11
AN3-7A	9	AN365-624	14
AN3-7A	29	AN365-624	10A
AN310-3	4	AN365-820	10A
AN310-3	23	AN380-2-2	4
AN310-3	24	AN380-2-2	15
AN310-5	11	AN380-2-2	20
AN310-6	1	AN380-2-2	18
AN310-8	26A	AN380-2-2	22
AN316-4	34A	AN380-2-2	21
AN316-4R	4	AN380-2-2	24
AN316-4R	5	AN380-2-2	11



PARTS LIST

<u>PART NUMBER</u>	<u>FIGURE NUMBER</u>	<u>PART NUMBER</u>	<u>FIGURE NUMBER</u>
AN380-2-4	24	AN526-1032R12	6
AN380-4-4	11	AN526-1032R16	1
AN380-4-8	10	AN526-1032R16	33
AN380-4-8	10A	AN526-1032R24	26A
AN380-5-6	11	AN526-1032R4	6
AN393-17	20	AN526-1032R6	6
AN4-10A	39	AN526-1032R6	22
AN4-11A	1	AN526-1032R6	27
AN4-11A	20	AN526-1032R6	28
AN4-11A	22	AN526-1032R6	36
AN4-11A	25	AN526-1032R8	25
AN4-12A	21	AN526-1032R8	28
AN4-22A	13	AN526-1032R8	35
AN4-4A	28	AN526-1032R9	6
AN4-5A	4	AN526-632R7	37
AN4-5A	5	AN526-632R9	26A
AN4-5A	17	AN526-832R20	7
AN4-6	52	AN526-832R6	3
AN426AD3-4	3	AN526-832R6	33
AN426AD-4	3	AN526-832R6	41
AN43B-12A	18	AN526-832R6	52
AN470AD3-4	25	AN526-832R8	1
AN490HT8P	21	AN526-832R8	3
AN490HT8P	22	AN526-832R8	29
AN5-12A	11	AN526-832R8	32
AN5-12A	15	AN526-832R8	38
AN5-12A	16	AN526-832R8	39
AN5-12A	17	AN526-832R8	41
AN5-16A	14	AN526-832R8	37
AN5-27A	21	AN530-6R4	38
AN5-7A	10A	AN565D8H4	10A
AN500-416-6	27	AN6-10A	11
AN509-10R14	5	AN6-12A	10A
AN509-10R19	4	AN6-12A	10
AN515B6R12	35	AN6-13A	10A
AN515B6R12	38	AN6-13A	10
AN515B632R5	36	AN6-14A	10A
AN515B632R5	38	AN6-14A	10A
AN515B632R5	39	AN6-15A	10
AN515B632R5	36	AN6-16A	10A
AN515B632R8	38	AN6-16A	10
AN515B632R8	6	AN6-17A	10A
AN520-10R14	6	AN6-20A	1
AN520-10R20	6	AN6-21	10
AN520-6-2	44	AN6-21A	14
AN526-1032R10	15	AN6-32A	4
AN526-1032R10	9	AN6-6A	5
AN526-1032R10	14	AN6-6A	1
AN526-1032R10	50	AN6-7A	5
AN526-1032R10	6	AN6-7A	17



PARTS LIST

<u>PART NUMBER</u>	<u>FIGURE NUMBER</u>	<u>PART NUMBER</u>	<u>FIGURE NUMBER</u>
AN6227-4	34A	AN960-10	9
AN6227-9	34A	AN960-10	11
AN735D16	27	AN960-10	14
AN737TW66	11	AN960-10	15
AN742DA	22	AN960-10	16
AN743-13	37	AN960-10	17
AN7502-24	10	AN960-10	18
AN8-11A	10A	AN960-10	19
AN8-13A	10A	AN960-10	20
AN8-14A	10A	AN960-10	21
AN8-15A	10	AN960-10	22
AN8-15A	10A	AN960-10	23
AN8-41	26A	AN960-10	24
AN815-AD	32	AN960-10	26A
AN816-3D	30	AN960-10	28
AN816-4D	29	AN960-10	32
AN816-4D	35	AN960-10	36
AN816-620	30	AN960-10	37
AN818-2D	28	AN960-10	39
AN818-4D	29	AN960-10	46
AN818-4D	44	AN960-10	48
AN818-6D	28	AN960-10	52
AN818-8D	30	AN960-10	6
AN822-2D	30	AN960-10L	1
AN822-3D	28	AN960-10L	2
AN822-4D	32	AN960-10L	3
AN832-4D	32	AN960-10L	9
AN832-6D	28	AN960-10L	6
AN833-D	28	AN960-10L	16
AN833-4D	32	AN960-10L	20
AN833-4D	35	AN960-10L	22
AN840-6D	36	AN960-10L	23
AN914-1D	30	AN960-10L	24
AN924D	28	AN960-10L	25
AN924-4D	32	AN960-10L	26A
AN924-5D	35	AN960-10L	27
AN924-6D	28	AN960-10L	29
AN935-10L	42	AN960-10L	42
AN935-6	44	AN960-1016	11
AN936-816	35	AN960-102	23
AN936A10	1	AN960-1216L	21
AN936A10	6	AN960-3	37
AN936A416	27	AN960-4	22
AN936A516	14	AN960-4	52
AN960-10	1	AN960-416	1
AN960-10	2	AN960-416	2
AN960-10	4	AN960-416	4
AN960-10	5	AN960-416	5



PARTS LIST

<u>PART NUMBER</u>	<u>FIGURE NUMBER</u>	<u>PART NUMBER</u>	<u>FIGURE NUMBER</u>
AN960-416	11	AN960-8	41
AN960-416	13	AN960-8	46
AN960-416	17	AN960-8	50
AN960-416	20	AN960-8L	6
AN960-416	21	AN960-816	10
AN960-416	22	AN960-816	26A
AN960-416	25	AN960-816	35
AN960-416	26A	AN960-816	10A
AN960-416	28	AN960-816L	10A
AN960-416	39	AN960-916	28
AN960-416L	6	AN970-3	1
AN960-416L	9	AN970-3	3
AN960-416L	21	AN970-3	9
AN960-416L	22	AN970-3	17
AN960-416L	52	AN970-3	33
AN960-516	11	AS20819-6D	28
AN960-516	14	A1D	28
AN960-516	15	A10-75	3
AN960-516	17	A10-75	4
AN960-516	18	A1165	6
AN960-516	21	A1165	50
AN960-516	10A	A1257A	2
AN960-516L	2	A15263-42-1	8
AN960-516L	8	A1717	6
AN960-516L	16	A1717	50
AN960-516L	18	A1776-4Z-1	45
AN960-6L	3	A1784-6Z-1	5
AN960-616	1	A2513-8	25
AN960-616	2	A3-13A	1
AN960-616	4	A3135-017-24A	6
AN960-616	5	A3135-017-4	6
AN960-616	10	A3135-017-4	50
AN960-616	11	A3235-028-24A	3
AN960-616	14	A6014-6Z-1	29
AN960-616	17	A6014-6Z-1	39
AN960-616	10A	A6014-6Z-1	43
AN960-616L	1	A7512-12	2
AN960-616L	5	A8-75	32
AN960-616L	10	A8-75	33
AN960-616L	24	A8944-632-24J	35
AN960-616L	25	A8944-632-24J	36
AN960-616L	10A	A8944-632-24J	38
AN960-716	11	A9032-6Z-1	23
AN960-716	31	B-36T-21	9
AN960-716L	11	B-36T-21	52
AN960-8	6		
AN960-8	29		
AN960-8	39		



PARTS LIST

<u>PART NUMBER</u>	<u>FIGURE NUMBER</u>	<u>PART NUMBER</u>	<u>FIGURE NUMBER</u>
B-710	21	MIL-H-6000-12	26A
BJ1000AH-4T	26A	MS20002C8	10
CAV-110H4	29	MS20220-1	18
CC-045D-7	7	MS20220-2	16
CP-2-314	48	MS20220-3	17
CR2163-4-2	4	MS20271-B10	21
CR2163-4-2	6	MS20326AD3-8	29
CR2163-4-4	9	MS20364-1032	1
CRZ249-4-2	7	MS20364-1032	2
C23-806	38	MS20364-1032	6
C23-807	38	MS20364-1032	9
C2300	38	MS20364-1032	17
C300-045-0380	6	MS20364-1032	23
C8096-1	39	MS20364-1032	24
DK-250	35	MS20364-1032	26A
D4410	9	MS20364-1032	27
D5412-L	6	MS20364-1032	28
FF-911-3	21	MS20364-1032	29
FT-191	33	MS20364-1032	33
F34-14	21	MS20364-1032	35
Grade #4-5/16	9	MS20364-1032	36
G51H-A	27	MS20364-1032	39
HKP	38	MS20364-1032	46
HKP	41	MS20364-1032	52
H323-4-1-2	43	MS20364-1032	6
H559-4-2	43	MS20364-420	22
IJ6-1	36	MS20364-428	1
IKI-6-10	36	MS20364-428	17
IK8-6-8	36	MS20364-428	25
KM610-64	7	MS20364-428	28
K-1000-3	3	MS20364-428	39
K-1000-3	6	MS20364-524	16
K-2402-2	28	MS20364-524	17
K-2402-2	38	MS20364-624	1
K7000-3-6	6	MS20364-624	11
LC-022D-1	1	MS20364-632	26A
LC-038G-5	27	MS20364-832	3
LE-0266-5	33	MS20364-832	29
LE-085J-4	9	MS20364-832	38
LK-862	26A	MS20364-832	41
M-5600	38	MS20364-832	46
MDL5	38	MS20365-1032	2
MIL-H-5593-10-0170	36	MS20365-1032	3
MIL-H-5593-6-0120	36	MS20365-1032	4
MIL-H-5593-6-0123	36	MS20365-1032	5
MIL-H-5593-6-0164	36	MS20365-1032	9
MIL-H-5593-6-0184	36	MS20365-1032	17
MIL-H-5593-8-0080	36	MS20365-428	2



PARTS LIST

<u>PART NUMBER</u>	<u>FIGURE NUMBER</u>	<u>PART NUMBER</u>	<u>FIGURE NUMBER</u>
MS20365-428	4	MS21251B5L	19
MS20365-428	5	MS21251B5S	17
MS20365-428	16	MS21252-5LS	17
MS20365-428	21	MS21254-5RL	17
MS20365-440	22	MS21256-1	17
MS20365-524	11	MS21256-2	17
MS20365-524	15	MS21256-2	18
MS20365-624	4	MS21256-2	19
MS20365-624	5	MS21262-50	11
MS20365-624	10	MS21266-1N	27
MS20365-624	17	MS21919DG2	28
MS20365-624	11	MS21919DG3	28
MS20365-632	37	MS21919DG3	33
MS20365-820	10	MS21919DG3	41
MS20365-832	39	MS21919DG4	35
MS20365-832	50	MS21919DG6	28
MS20392-1C53	17	MS24665-132	1
MS20392-2C43	9	MS24665-132	9
MS20392-2C83	37	MS24665-132	16
MS20426AD3-4	7	MS24665-132	17
MS20426AD3-4	25	MS24665-132	19
MS20426AD3-5	7	MS24665-132	23
MS20426AD4-5	6	MS24665-132	26A
MS20426AD4-5	7	MS24665-132	27
MS20426AD4-5	9	MS24665-132	37
MS20426AD5-8	6	MS24665-283	1
MS20426A3-4	37	MS24665-285	26A
MS20426B4-4	5	MS24693-S26	2
MS20426B6-7	6	MS24693-S271	6
MS204264-4	2	MS24693-S272	6
MS20470AD3-3	5	MS24693-S273	3
MS20470AD4-4	26A	MS24693-S273	6
MS20470AD4-5	9	MS24693-S275	6
MS20470AD4-5	14	MS24693-S30	2
MS20470AD4-5	15	MS24693-S50	6
MS20470AD5-5	29	MS24693-S50	9
MS20470AD5-6	29	MS24693-S51	6
MS20470A3-4	52	MS24693-S51	9
MS20819-4D	29	MS24693-S53	50
MS20819-4D	44	MS24694-S5	2
MS20819-6D	28	MS24694-S53	4
MS20819-20	28	MS24694-S53	5
MS20995-C32	1	MS24694-S56	9
MS20995-C41	25	MS24694-S58	46
MS21025-24	10A	MS24995-C41	33
MS21104D4	32	MS25253-3	22
MS21251B5L	17	MS27039-1-09	52
MS21251B5L	18	MS27039-1-11	52



PARTS LIST

<u>PART NUMBER</u>	<u>FIGURE NUMBER</u>	<u>PART NUMBER</u>	<u>FIGURE NUMBER</u>
MS27975-4	22	NAS464P4A28	11
MS27976-12	22	NAS464P6A28	11
MS28741-4-0110	32	NAS464P7A29	11
MS2919DGS3	37	NAS680A3	7
MS29493-S272	7	NAS680A3	29
MS29512-06	28	NAS680A3K	3
MS29513-224	11	NAS680A31C	48
MS29513-361	29	NAS680A4	52
MS35273-19	22	NAS680A5	8
MS35333-38	6	NAS680AD8	26A
MS35426-14	1	NAS684A6	11
MS35489-100	1	NAS686A3	25
MS35489-4	41	NK565C6H	28
MS35489-6	1	NSS680A08	1
MS35489-6	35	N5000-175	34A
MS35490-15	27	PF3011-2	30
MS35490-6	35	PH502-12	44
MS35490-6	46	P3293	22
MS35691-34	11	P3293-1	22
MS90725-10	26A	N4101-15	22
NAS1027N4	17	P4134	22
NAS1368N4C	39	P9-29	22
NAS1368N4C	26A	QS100M16S	37
NAS146-20	11	QS100M16S	26A
NAS148-28	10	QS100M16S	32
NAS148-29	10A	QS100M36S	26A
NAS220-8	46	QS100M36S	37
NAS221-11	9	QS200M52S	26A
NAS221-12	9	Q5100-M165	22
NAS221-12	22	RCA10J4980-04	36
NAS221-12	23	RCA10J4980-04	38
NAS221-8	4	RCA20K5750-01	36
NAS221-9	9	RCA20K5750-01	38
NAS222-18	1	RM52LHA4972-10-82	3
NAS385-6-10	46	RM52LHA4972-8-82	2
NA391-6	46	R4G	7
NAS395-2-3	1	S-16-AR-RT-CC	43
NAS395-4-1	1	SA-4	1
NAS395-4-1	46	SALPT6-8	21
NAS396	8	SALPT6-8	22
NAS3961-1	24	SAW4204	39
NAS397-8	29	SB-625-7	23
NAS428-4-13	4	SP10403-1-AA	35
NAS428-4-13	4	SP10403-1-AA	38
NAS428-4-13	17	SR-1395-2	22
NAS451-56	11	S1D	41
NAS451-56	14	TIGK51-IS-RD-F	38
NAS451-56	15	TS-33-30	34A



PARTS LIST

<u>PART NUMBER</u>	<u>FIGURE NUMBER</u>	<u>PART NUMBER</u>	<u>FIGURE NUMBER</u>
TT-1508-2	11	101-02700	12
VSF-7202-1A	39	101-9C	41
W-33-7510-10	38	101019-2	7
WL725	37	101019-3	7
X-4666	3	101019-4	7
X-5133-21	34A	101019-501	7
XIA	41	101020-11	7
XR-6937	38	101020-501	7
X670401	28	101021-5	7
Y9132A	7	101021-501	7
Y9132B	43	101022-501	7
Y9132D	6	101023-1	7
O-235-C2C	26A	102031-1	1
000003-1	47	102031-2	1
02062-2	39	102039-1	1
061-02100	12	102269-1	6
062-01500	12	102269-2	6
063-01200	12	102269-5	6
064-01500	12	102269-501	6
066-03000	12	102269-502	6
069-00400	12	102270-501	6
073-01100	12	102271-1	6
074-01000	12	102271-501	6
075-05600	12	102272-501	6
079-00300	12	102273-1	6
081-00100	12	102273-2	6
08125	13	102273-3	6
082-00800	34B	102273-502	6
082-00900	34B	102274-501	6
092-01500	34B	102276-1	6
092-01600	12	102276-2	6
094-03000	34B	102276-3	6
094-10300	12	102276-4	6
094-10400	12	102276-5	6
095-01100	34B	102276-502	6
095-10200	12	102276-503	6
095-10200	34B	102276-6	6
095-10500	12	102276-7	6
1/4	9	102278-501	6
1A105/SCM7157	25	102279-1	6
10-357290-1	38	102280-1	6
10073-501	32	102281-1	6
10073-502	32	102281-2	6
10073-503	32	102282-1	6
10073-504	32	102284-1	6
101-00700	34B	102286-1	6
101-00800	34B	102286-501	6
101-01100	34B	102288-1	6