

SUMP ASSEMBLY

QUANTITY PER ASSEMBLY

SECTION

2

PAGE

2-8

EF.	PART NUMBER	DESCRIPTION	O-320 SERIES																								10-320				L10-320			
			A2A	A2B	A2C	A3A	A3B	A3C	B2A	B2B	B2C	B3A	B3B	B3C	D2A	D2B	D2C	E2A	E2B	E2C	E2D	B1A	B1C	C1A	E2A	B1A	B1C	C1A	E2A	B1A	B1C	C1A		
1	68972	GASKET, Oil sump	1	1	1	1	1	1	1	1	1	1	1	1																				
2	69370*	SUMP ASSEMBLY, Oil - STD	1	1		1						1		1																				
2	69370*	SUMP ASSEMBLY, Oil - WCF				1																												
2	72362**	SUMP ASSEMBLY, Oil - STD			1	1		1	1			1		1	1																			
2	72362**	SUMP ASSEMBLY, Oil - WCF			1			1				1		1																				
2	77965+	SUMP ASSEMBLY, Oil - WCF																																
3	61376	CONNECTION, Intake pipe, front	2	2	2	2	2	2	2	2	2	2	2	2	2																			
1	61377	CONNECTION, Intake pipe, rear	2	2	2	2	2	2	2	2	2	2	2	2	2																			
3	68437	STUD, 5/16-18 x 1-7/8 in. long	4	4	4	4	4	4	4	4	4	4	4	4	4																			
3	STD-551	PLUG, 1/2-14 NPT, square hd.	1	1	1	1	1	1	1	1	1	1	1	1	1																			
7	STD-1204	BOLT, 1/4-20 x 15/16 in. long	6	6	6	6	6	6	6	6	6	6	6	6	6																			
7	STD-8	WASHER, 1/4 plain	6	6	6	6	6	6	6	6	6	6	6	6	6																			
7	STD-160	WASHER, 1/4 lock	6	6	6	6	6	6	6	6	6	6	6	6	6																			
3	STD-1411	NUT, 1/4-20 plain	2	2	2	2	2	2	2	2	2	2	2	2	2																			
3	STD-8	WASHER, 1/4 plain	2	2	2	2	2	2	2	2	2	2	2	2	2																			
3	STD-160	WASHER, 1/4 lock	2	2	2	2	2	2	2	2	2	2	2	2	2																			
3	STD-1204	BOLT, 1/4-20 x 15/16 in. long	12	12	12	12	12	12	12	12	12	12	12	12	12																			
3	STD-8	WASHER, 1/4 plain	24	24	24	24	24	24	24	24	24	24	24	24	24																			
3	STD-160	WASHER, 1/4 lock	12	12	12	12	12	12	12	12	12	12	12	12	12																			
3	STD-1411	NUT, 1/4-20 plain	12	12	12	12	12	12	12	12	12	12	12	12	12																			
3	60820	GASKET, Oil suction tube	1	1	1	1	1	1	1	1	1	1	1	1	1																			
1	61391	TUBE ASSY., Oil suction	1	1	1	1	1	1	1	1	1	1	1	1	1																			
3	S 1227	WASHER, 1/4 plain, copper	2	2	2	2	2	2	2	2	2	2	2	2	2																			
3	STD-1433	BOLT, 1/4-20 x 1-1/2 in. long	2	2	2	2	2	2	2	2	2	2	2	2	2																			
3	STD-8	WASHER, 1/4 plain (max. 4)	AR	AR	AR	AR	AR	AR	AR	AR	AR	AR	AR	AR	AR																			
3	STD-1409	NUT, 1/4-20 slotted	2	2	2	2	2	2	2	2	2	2	2	2	2																			
3	STD-68	PIN, 1/16 dia. x 1/2 in. long	2	2	2	2	2	2	2	2	2	2	2	2	2																			
7	61378	SCREEN, Oil suction	1	1	1	1	1	1	1	1	1	1	1	1	1																			
3	STD-1045	GASKET, 1-1/4 ID x 1-1/2 in. OD	1	1	1	1	1	1	1	1	1	1	1	1	1																			
3	61358	PLUG, 1-1/2 in. hex. hd. x 1-1/4-12 thd.	1	1	1	1	1	1	1	1	1	1	1	1	1																			
3	61548	NAMEPLATE	1	1	1	1	1	1	1	1	1	1	1	1	1																			
3	STD-1901	DRIVE STUD, No. 4 x .19 in. long	4	4	4	4	4	4	4	4	4	4	4	4	4																			

* - Large inlet chamfer. Use carburetor 69250.

** - Straight riser. Use carburetor 72394, or injector 77260.

+ - Vertical inlet fuel injector. Use injector 77260.

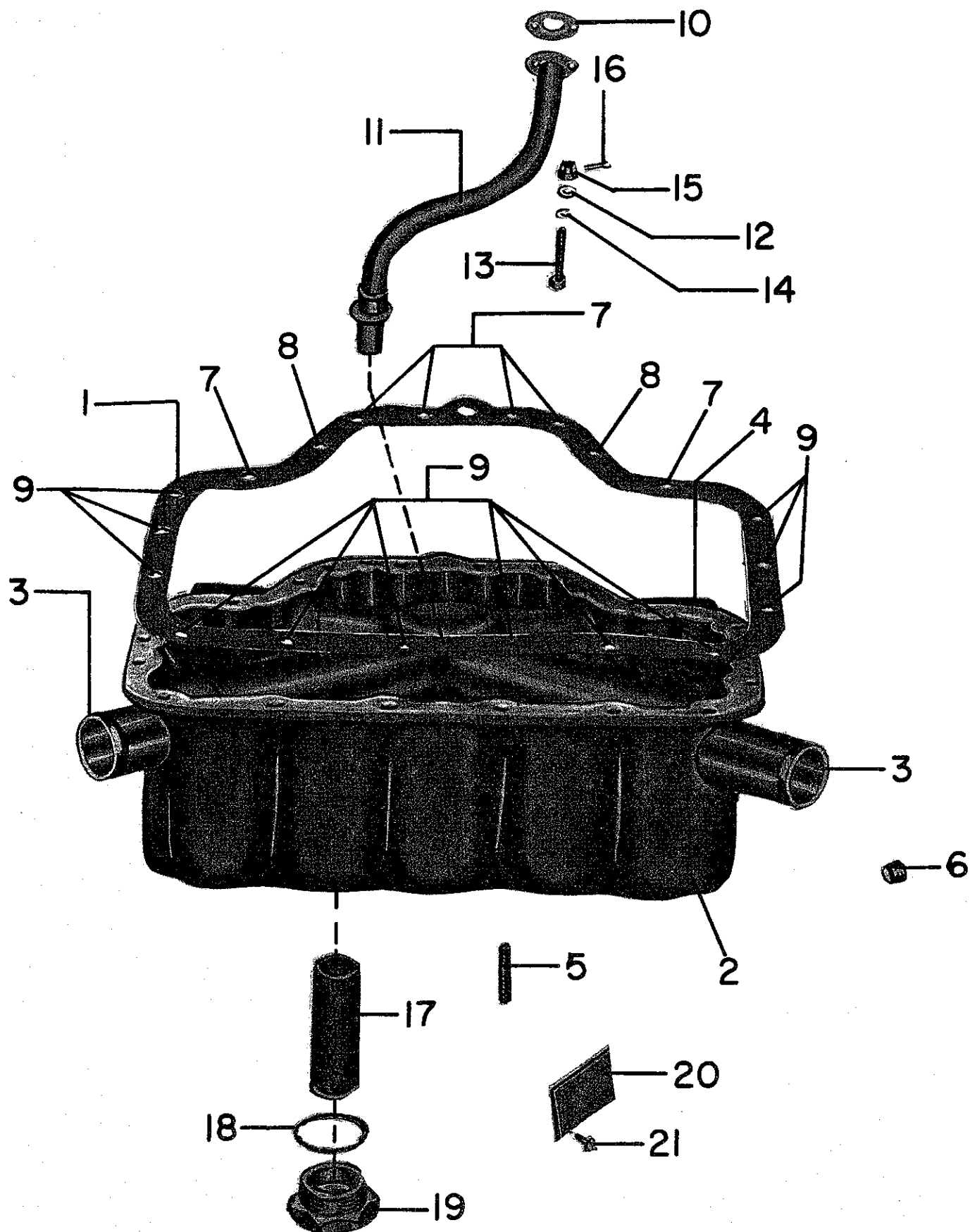


Figure 2-8. Sump Assembly

SECTION
2
PAGE
2-9

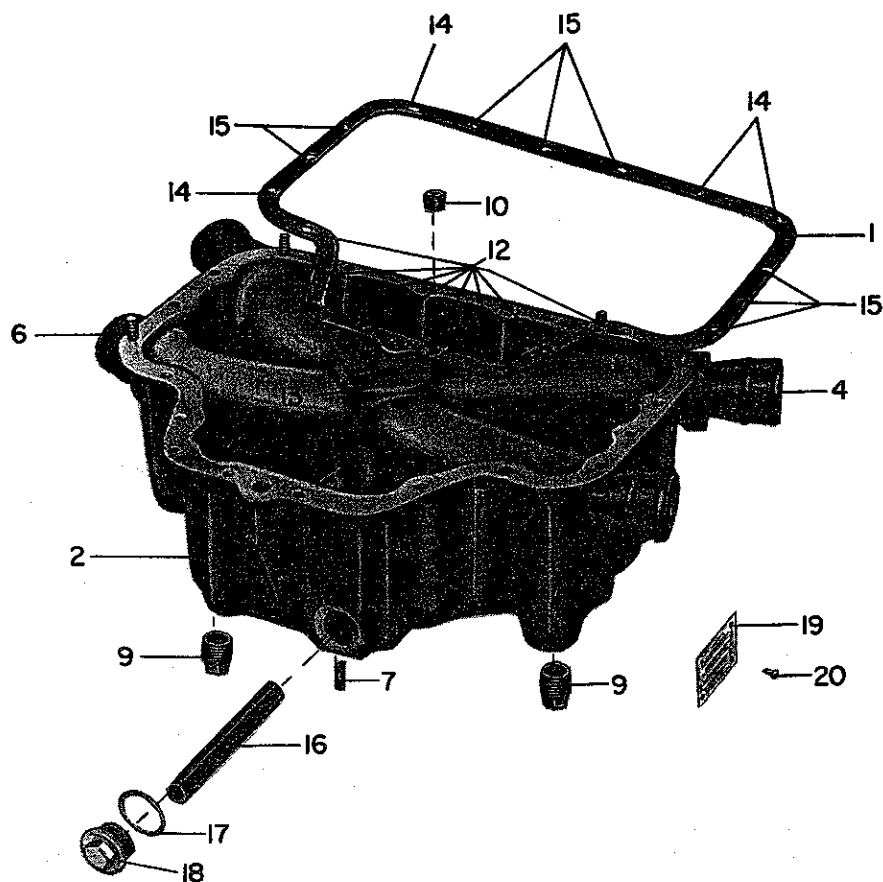
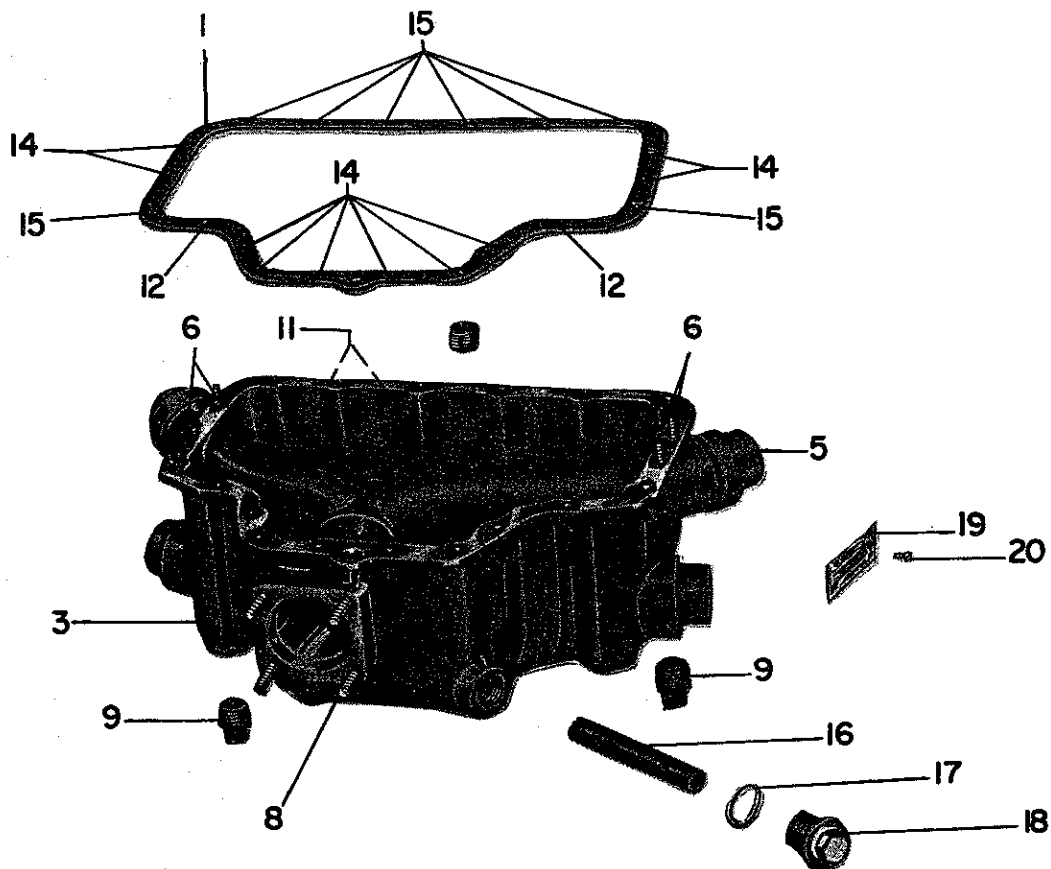


Figure 2-9. Sump Assembly

AVCO LYCOMING AIRCRAFT ENGINE GROUP ASSEMBLY PARTS LIST

Section 3 Cylinder

AVCO LYCOMING PARTS CATALOG

O-320, IO-320 AND LIO-320 SERIES

SECTION 3

CYLINDER, PISTON AND VALVE TRAIN

AVCO LYCOMING AIRCRAFT ENGINE GROUP ASSEMBLY PARTS LIST

with this cylinder	on this model	use this piston	with this top ring	this 2nd ring	this oil ring	this exhaust valve	this intake valve	and service with this kit	
71840C	O-320-A, -E	75413	74673	74673	73998	75068	73938	None	
71840C	O-320-A, -E	74059FW	71556	71556	72454	75068	73938	None	See Note
71841P	O-320-A, -E	75413	74989	74989	73857	75068	73938	None	
71841P	O-320-A, -E	74059FW	68513	68512	72454	75068	73938	None	See Note
71844P	O-320-B, -D	71594FW	68513	68513	69457	74541	73938	None	
71844P	O-320-B, -D	75089	74989	74989	73857	74541	73938	None	
71969C	O-320-B, -D	71594FW	71556	71556	72454	74541	73938	None	
71969C	O-320-B, -D	75089	74673	74673	73998	74541	73938	None	
73149N	O-320-B, -D	75089	74241	74241	73857	74541	73938	None	
74468N	IO-320-B1A	75089	74241	74241	73857	74541	73938	75403	
75042N*	O-320-B, -D and LIO-320-B	75089	74241	74241	73857	74541	73938	75401	
	IO-320-B, -D								
75042N*	O-320-E2A, -E2C	75413	74241	74241	73857	75068	73938	77462	
	IO-320-E2A								
7514N*	O-320-B, -D	75089	74241	74241	73857	74541	73938	None	
75183C	O-320-A, -E	75413	74673	74673	73998	75068	73938	76500	
75183C	O-320-A, -E	74059	71556	71556	72454	75068	73938	None	See Note
75184P	O-320-A, -E	75413	74989	74989	73857	75068	73938	76658	
75184P	O-320-A, -E	74059	68513	68512	72454	75068	73938	None	See Note
75188C	O-320-B, -D	75089	74673	74673	73998	74541	73938	76236	
75188C	O-320-B, -D	71594FW	71556	71556	72454	74541	73938	76234	
75317P*	O-320-A, -E	74059FW	68513	68512	72454	75068	73938	None	
75361N	O-320-B, -D	75089	74241	74241	73857	74541	73938	76235	
75868P*	O-320-A, -E	75413	74989	74989	73857	75068	73938	76659	
75868P*	O-320-A, -E	74059FW	68513	68512	72454	75068	73938	None	See Note
75907C*	O-320-A, -E	75413	74673	74673	73998	75068	73938	78513	
75907C*	O-320-B, -D	75089	74673	74673	73998	74541	73938	76239	
75907C	O-320-A, -E	74059FW	71556	71556	72454	75068	73938	None	See Note
76086N*	IO-320-C1A and LIO-320-C1A	75089	74241	74241	73857	76081	73938	76449	
77476P	O-320-B, -D	75089	74989	74989	73857	74541	73938	78515	
77476P	O-320-B, -D	71594FW	68513	68513	69457	74541	73938	78516	
75854C*	O-320-A2B	75413	74673	74673	73998	75068	73938	None	

* - Wide Cylinder Flange.

C - Chrome

P - Plain

N - Nitrided

- Full Wedge Rings

NOTE: Piston P/N 74059 and P/N 75413 are interchangeable singly or in sets - with proper ring combination.
Piston 74059 is no longer available. Pistons and rings are available in oversize P10 and P20, for use in plain cylinder barrels only.

See latest edition of Service Instruction No. 1037

7/16" exhaust valves are no longer available. See latest edition of Service Instruction No. 1136.

AVCO LYCOMING AIRCRAFT ENGINE GROUP ASSEMBLY PARTS LIST

O-320, IO-320, LIO-320 SERIES 3-1 - PISTON AND RINGS

REF. NO.	PART NUMBER	1	2	3	4	5	DESCRIPTION	QTY. PER ENG.	MODEL USAGE
1	See chart						PISTON	4	See chart
2	opposite for						RING, Piston, top	4	opposite for
3	part						RING, Piston, 2nd	4	model
4	numbers						RING, Piston, oil regulating	4	application.
5*	77857						PIN, Piston (heavy)	4	
5	69650						PIN, Piston	4	
6	60828						PLUG, Piston pin - use with plain or nitrided cylinder assemblies	8	
6	72198						PLUG, Piston pin - use with chrome cylinder assemblies	8	

* - O-320-A and -E (low compression) only.

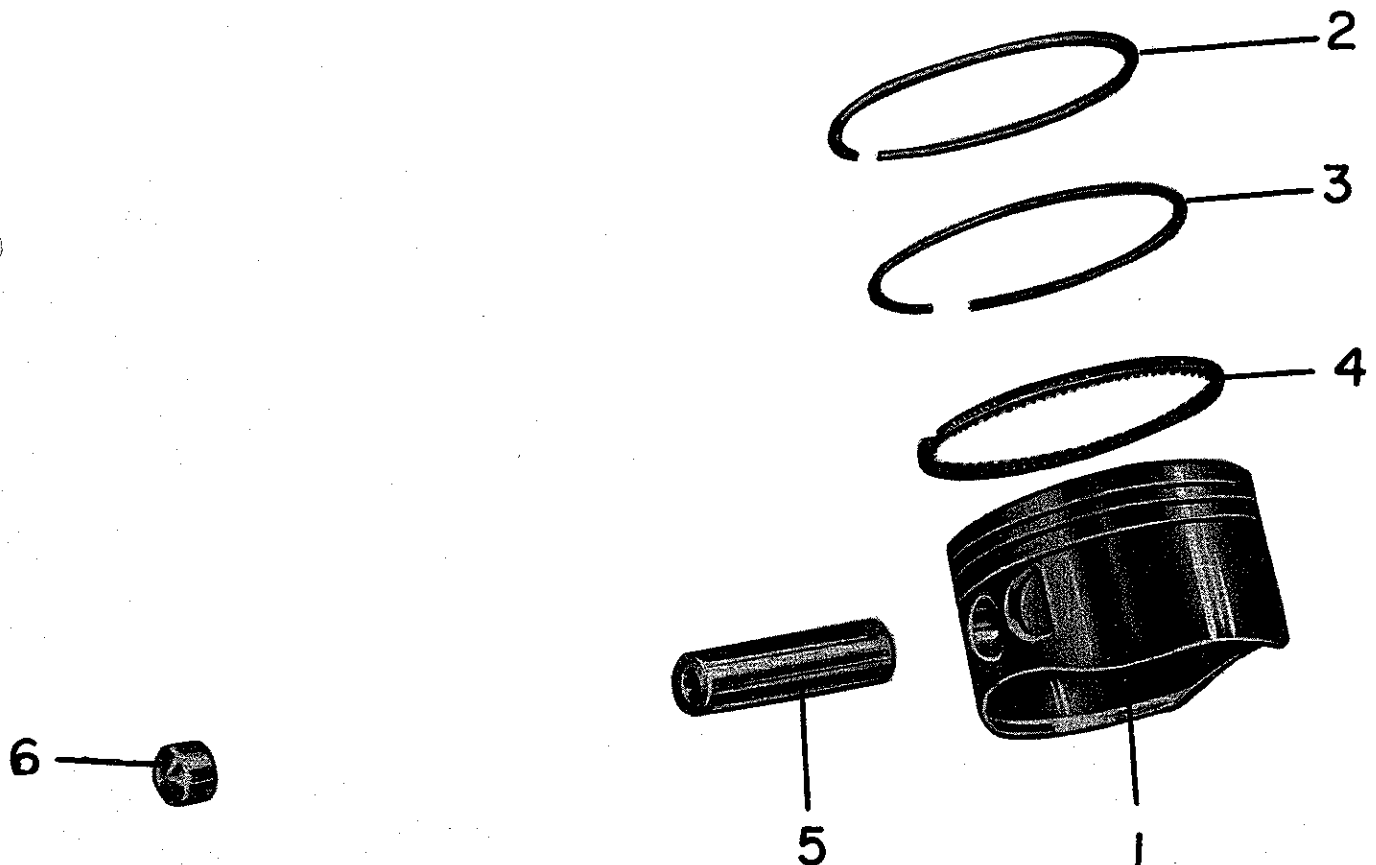


Figure 3-1. Piston and Rings

SECTION

3

LI0-32C

110-320

PAGE

P.F.		PART NUMBER	DESCRIPTION	QUANTITY PER ASSEMBLY																																																																																																																																																																																																																																																																																																																																																																																																																																																																																																																				
				O-320 SERIES														10-320				L10-320																																																																																																																																																																																																																																																																																																																																																																																																																																																																																																		
				A2A	A2B	A2C	A3A	A3B	A3C	B2A	B2B	B2C	B3A	B3B	B3C	D2A	D2B	D2C	E2A	E2B	E2C	F2A	F2B	F2C	G2A	G2B	G2C	H2A	H2B	H2C	I2A	I2B	I2C	J2A	J2B	J2C	K2A	K2B	K2C	L2A	L2B	L2C	M2A	M2B	M2C	N2A	N2B	N2C	O2A	O2B	O2C	P2A	P2B	P2C	Q2A	Q2B	Q2C	R2A	R2B	R2C	S2A	S2B	S2C	T2A	T2B	T2C	U2A	U2B	U2C	V2A	V2B	V2C	W2A	W2B	W2C	X2A	X2B	X2C	Y2A	Y2B	Y2C	Z2A	Z2B	Z2C	AA2A	AA2B	AA2C	AB2A	AB2B	AB2C	AC2A	AC2B	AC2C	AD2A	AD2B	AD2C	AE2A	AE2B	AE2C	AF2A	AF2B	AF2C	AG2A	AG2B	AG2C	AH2A	AH2B	AH2C	AI2A	AI2B	AI2C	AJ2A	AJ2B	AJ2C	AK2A	AK2B	AK2C	AL2A	AL2B	AL2C	AM2A	AM2B	AM2C	AN2A	AN2B	AN2C	AO2A	AO2B	AO2C	AP2A	AP2B	AP2C	AQ2A	AQ2B	AQ2C	AR2A	AR2B	AR2C	AS2A	AS2B	AS2C	AT2A	AT2B	AT2C	AU2A	AU2B	AU2C	AV2A	AV2B	AV2C	AW2A	AW2B	AW2C	AX2A	AX2B	AX2C	AY2A	AY2B	AY2C	AZ2A	AZ2B	AZ2C	BA2A	BA2B	BA2C	BB2A	BB2B	BB2C	BC2A	BC2B	BC2C	BD2A	BD2B	BD2C	BE2A	BE2B	BE2C	BF2A	BF2B	BF2C	BG2A	BG2B	BG2C	BH2A	BH2B	BH2C	BI2A	BI2B	BI2C	BJ2A	BJ2B	BJ2C	BK2A	BK2B	BK2C	BL2A	BL2B	BL2C	BM2A	BM2B	BM2C	BN2A	BN2B	BN2C	BO2A	BO2B	BO2C	BP2A	BP2B	BP2C	BQ2A	BQ2B	BQ2C	BR2A	BR2B	BR2C	BS2A	BS2B	BS2C	BT2A	BT2B	BT2C	BU2A	BU2B	BU2C	BV2A	BV2B	BV2C	BW2A	BW2B	BW2C	BX2A	BX2B	BX2C	BY2A	BY2B	BY2C	BZ2A	BZ2B	BZ2C	CA2A	CA2B	CA2C	CB2A	CB2B	CB2C	CC2A	CC2B	CC2C	CD2A	CD2B	CD2C	CE2A	CE2B	CE2C	CF2A	CF2B	CF2C	CG2A	CG2B	CG2C	CH2A	CH2B	CH2C	CI2A	CI2B	CI2C	CJ2A	CJ2B	CJ2C	CK2A	CK2B	CK2C	CL2A	CL2B	CL2C	CM2A	CM2B	CM2C	CN2A	CN2B	CN2C	CO2A	CO2B	CO2C	CP2A	CP2B	CP2C	CQ2A	CQ2B	CQ2C	CR2A	CR2B	CR2C	CS2A	CS2B	CS2C	CT2A	CT2B	CT2C	CU2A	CU2B	CU2C	CV2A	CV2B	CV2C	CW2A	CW2B	CW2C	CX2A	CX2B	CX2C	CY2A	CY2B	CY2C	CZ2A	CZ2B	CZ2C	DA2A	DA2B	DA2C	DB2A	DB2B	DB2C	DC2A	DC2B	DC2C	DD2A	DD2B	DD2C	DE2A	DE2B	DE2C	DF2A	DF2B	DF2C	DG2A	DG2B	DG2C	DH2A	DH2B	DH2C	DI2A	DI2B	DI2C	DJ2A	DJ2B	DJ2C	DK2A	DK2B	DK2C	DL2A	DL2B	DL2C	DM2A	DM2B	DM2C	DN2A	DN2B	DN2C	DO2A	DO2B	DO2C	DP2A	DP2B	DP2C	DQ2A	DQ2B	DQ2C	DR2A	DR2B	DR2C	DS2A	DS2B	DS2C	DT2A	DT2B	DT2C	DU2A	DU2B	DU2C	DV2A	DV2B	DV2C	DW2A	DW2B	DW2C	DX2A	DX2B	DX2C	DY2A	DY2B	DY2C	DZ2A	DZ2B	DZ2C	EA2A	EA2B	EA2C	EB2A	EB2B	EB2C	EC2A	EC2B	EC2C	ED2A	ED2B	ED2C	EE2A	EE2B	EE2C	EF2A	EF2B	EF2C	EG2A	EG2B	EG2C	EH2A	EH2B	EH2C	EI2A	EI2B	EI2C	EJ2A	EJ2B	EJ2C	EK2A	EK2B	EK2C	EL2A	EL2B	EL2C	EM2A	EM2B	EM2C	EN2A	EN2B	EN2C	EO2A	EO2B	EO2C	EP2A	EP2B	EP2C	EQ2A	EQ2B	EQ2C	ER2A	ER2B	ER2C	ES2A	ES2B	ES2C	ET2A	ET2B	ET2C	EU2A	EU2B	EU2C	EV2A	EV2B	EV2C	EW2A	EW2B	EW2C	EX2A	EX2B	EX2C	EY2A	EY2B	EY2C	EZ2A	EZ2B	EZ2C	FA2A	FA2B	FA2C	FB2A	FB2B	FB2C	FC2A	FC2B	FC2C	FD2A	FD2B	FD2C	FE2A	FE2B	FE2C	FF2A	FF2B	FF2C	FG2A	FG2B	FG2C	FH2A	FH2B	FH2C	FI2A	FI2B	FI2C	FJ2A	FJ2B	FJ2C

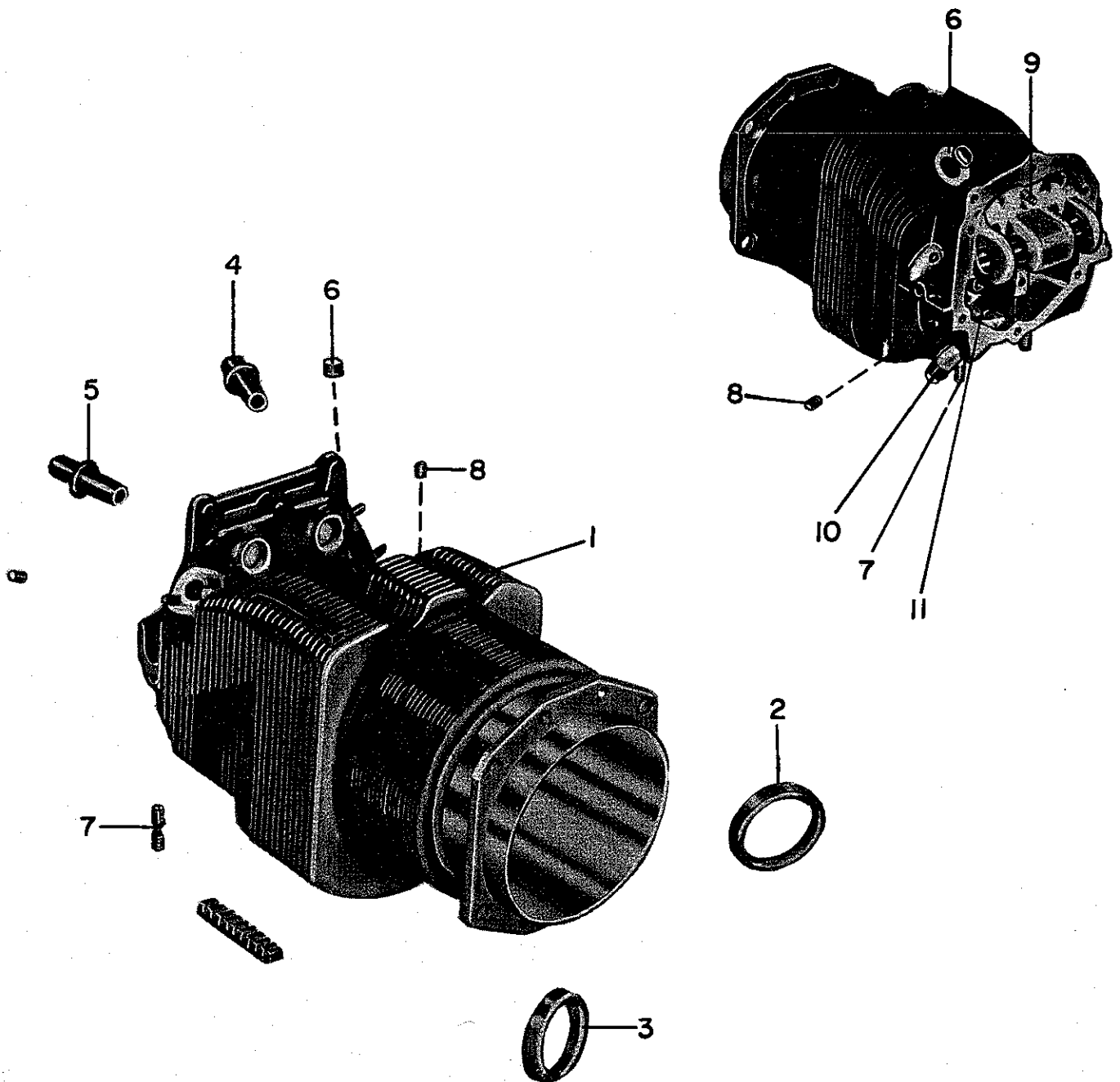


Figure 3-2. Cylinder Assembly

SECTION

3

PAGE
77

3-3

1

		VALVES AND PLUNGERS																												SECTION																																																																																																																																																																																																																																																																																																																																																																																																																																																																																						
		QUANTITY PER ASSEMBLY																												PAGE																																																																																																																																																																																																																																																																																																																																																																																																																																																																																						
		O-320 SERIES														10-320				L10-320				3-3																																																																																																																																																																																																																																																																																																																																																																																																																																																																																												
		A2A	A2B	A2C	A3A	A3B	A3C	B2A	B2B	B2C	B3A	B3B	B3C	D2A	D2B	D2C	E2A	E2B	E2C	F2A	F2B	F2C	G2A	G2B	G2C	H2A	H2B	H2C	I2A	I2B	I2C	J2A	J2B	J2C	K2A	K2B	K2C	L2A	L2B	L2C	M2A	M2B	M2C	N2A	N2B	N2C	O2A	O2B	O2C	P2A	P2B	P2C	Q2A	Q2B	Q2C	R2A	R2B	R2C	S2A	S2B	S2C	T2A	T2B	T2C	U2A	U2B	U2C	V2A	V2B	V2C	W2A	W2B	W2C	X2A	X2B	X2C	Y2A	Y2B	Y2C	Z2A	Z2B	Z2C	AA2A	AA2B	AA2C	AB2A	AB2B	AB2C	AC2A	AC2B	AC2C	AD2A	AD2B	AD2C	AE2A	AE2B	AE2C	AF2A	AF2B	AF2C	AG2A	AG2B	AG2C	AH2A	AH2B	AH2C	AI2A	AI2B	AI2C	AJ2A	AJ2B	AJ2C	AK2A	AK2B	AK2C	AL2A	AL2B	AL2C	AM2A	AM2B	AM2C	AN2A	AN2B	AN2C	AO2A	AO2B	AO2C	AP2A	AP2B	AP2C	AQ2A	AQ2B	AQ2C	AR2A	AR2B	AR2C	AS2A	AS2B	AS2C	AT2A	AT2B	AT2C	AU2A	AU2B	AU2C	AV2A	AV2B	AV2C	AW2A	AW2B	AW2C	AX2A	AX2B	AX2C	AY2A	AY2B	AY2C	AZ2A	AZ2B	AZ2C	BA2A	BA2B	BA2C	BB2A	BB2B	BB2C	BC2A	BC2B	BC2C	BD2A	BD2B	BD2C	BE2A	BE2B	BE2C	BF2A	BF2B	BF2C	BG2A	BG2B	BG2C	BH2A	BH2B	BH2C	BI2A	BI2B	BI2C	BJ2A	BJ2B	BJ2C	BK2A	BK2B	BK2C	BL2A	BL2B	BL2C	BM2A	BM2B	BM2C	BN2A	BN2B	BN2C	BO2A	BO2B	BO2C	BP2A	BP2B	BP2C	BQ2A	BQ2B	BQ2C	BR2A	BR2B	BR2C	BS2A	BS2B	BS2C	BT2A	BT2B	BT2C	BU2A	BU2B	BU2C	BV2A	BV2B	BV2C	BW2A	BW2B	BW2C	BX2A	BX2B	BX2C	BY2A	BY2B	BY2C	BZ2A	BZ2B	BZ2C	CA2A	CA2B	CA2C	CB2A	CB2B	CB2C	CC2A	CC2B	CC2C	CD2A	CD2B	CD2C	CE2A	CE2B	CE2C	CF2A	CF2B	CF2C	CG2A	CG2B	CG2C	CH2A	CH2B	CH2C	CI2A	CI2B	CI2C	CJ2A	CJ2B	CJ2C	CK2A	CK2B	CK2C	CL2A	CL2B	CL2C	CM2A	CM2B	CM2C	CN2A	CN2B	CN2C	CO2A	CO2B	CO2C	CP2A	CP2B	CP2C	CQ2A	CQ2B	CQ2C	CR2A	CR2B	CR2C	CS2A	CS2B	CS2C	CT2A	CT2B	CT2C	CU2A	CU2B	CU2C	CV2A	CV2B	CV2C	CW2A	CW2B	CW2C	CX2A	CX2B	CX2C	CY2A	CY2B	CY2C	CZ2A	CZ2B	CZ2C	DA2A	DA2B	DA2C	DB2A	DB2B	DB2C	DC2A	DC2B	DC2C	DD2A	DD2B	DD2C	DE2A	DE2B	DE2C	DF2A	DF2B	DF2C	DG2A	DG2B	DG2C	DH2A	DH2B	DH2C	DI2A	DI2B	DI2C	DJ2A	DJ2B	DJ2C	DK2A	DK2B	DK2C	DL2A	DL2B	DL2C	DM2A	DM2B	DM2C	DN2A	DN2B	DN2C	DO2A	DO2B	DO2C	DP2A	DP2B	DP2C	DQ2A	DQ2B	DQ2C	DR2A	DR2B	DR2C	DS2A	DS2B	DS2C	DT2A	DT2B	DT2C	DU2A	DU2B	DU2C	DV2A	DV2B	DV2C	DW2A	DW2B	DW2C	DX2A	DX2B	DX2C	DY2A	DY2B	DY2C	DZ2A	DZ2B	DZ2C	EA2A	EA2B	EA2C	EB2A	EB2B	EB2C	EC2A	EC2B	EC2C	ED2A	ED2B	ED2C	EE2A	EE2B	EE2C	EF2A	EF2B	EF2C	EG2A	EG2B	EG2C	EH2A	EH2B	EH2C	EI2A	EI2B	EI2C	EJ2A	EJ2B	EJ2C	EK2A	EK2B	EK2C	EL2A	EL2B	EL2C	EM2A	EM2B	EM2C	EN2A	EN2B	EN2C	EO2A	EO2B	EO2C	EP2A	EP2B	EP2C	EQ2A	EQ2B	EQ2C	ER2A	ER2B	ER2C	ES2A	ES2B	ES2C	ET2A	ET2B	ET2C	EU2A	EU2B	EU2C	EV2A	EV2B	EV2C	EW2A	EW2B	EW2C	EX2A	EX2B	EX2C	EY2A	EY2B	EY2C	EZ2A	EZ2B	EZ2C	FA2A	FA2B	FA2C	FB2A	FB2B	FB2C	FC2A	FC2B	FC2C	FD2A	FD2B	FD2C	FE2A	FE2B	FE2C	FF2A	FF2B	FF2C	FG2A	FG2B	FG2C	FH2A	FH2B	FH2C	FI2A	FI2B	FI2C	FJ2A

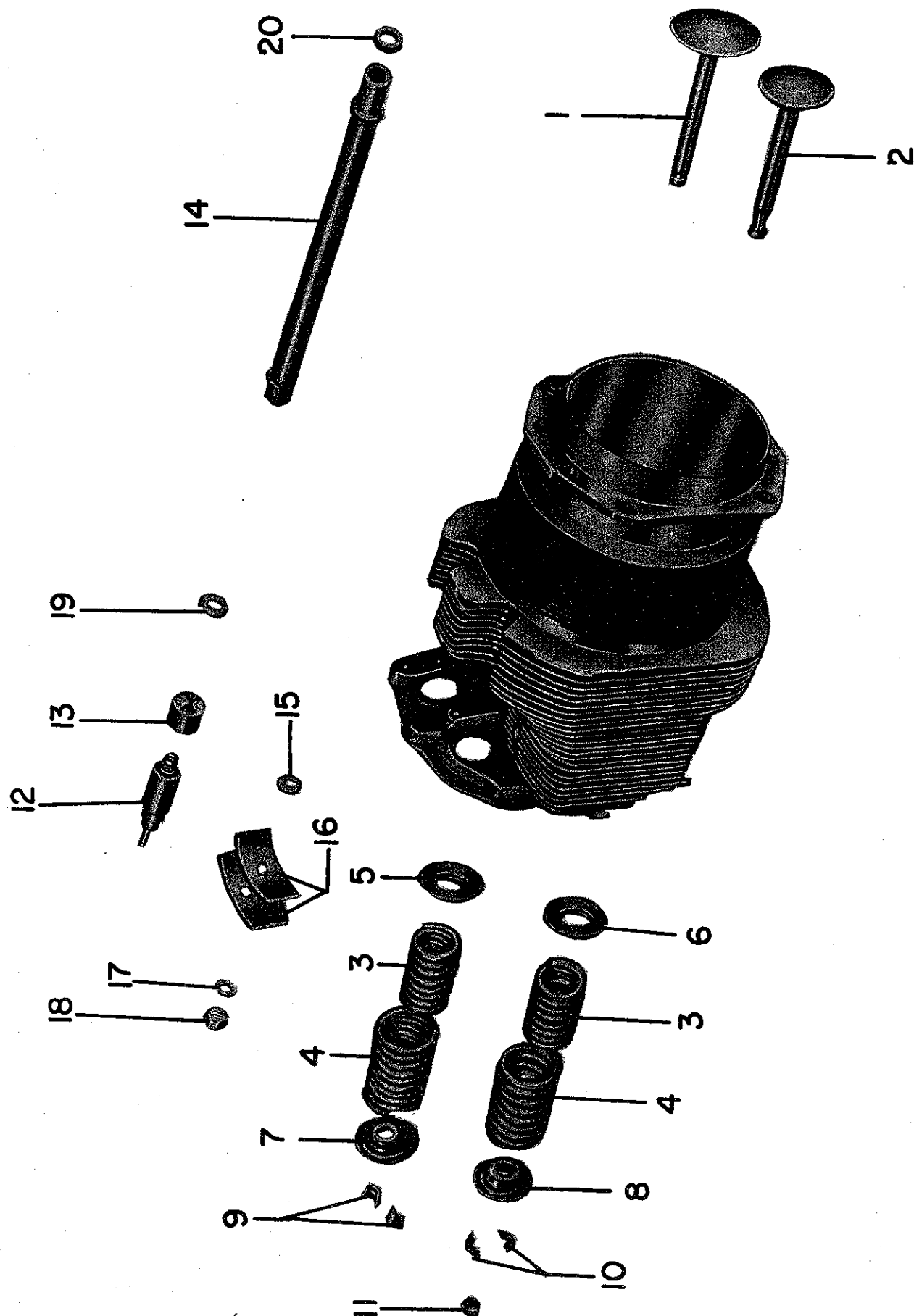


Figure 3-3. Valves and Plungers

QUANTITY PER ASSEMBLY

3-4



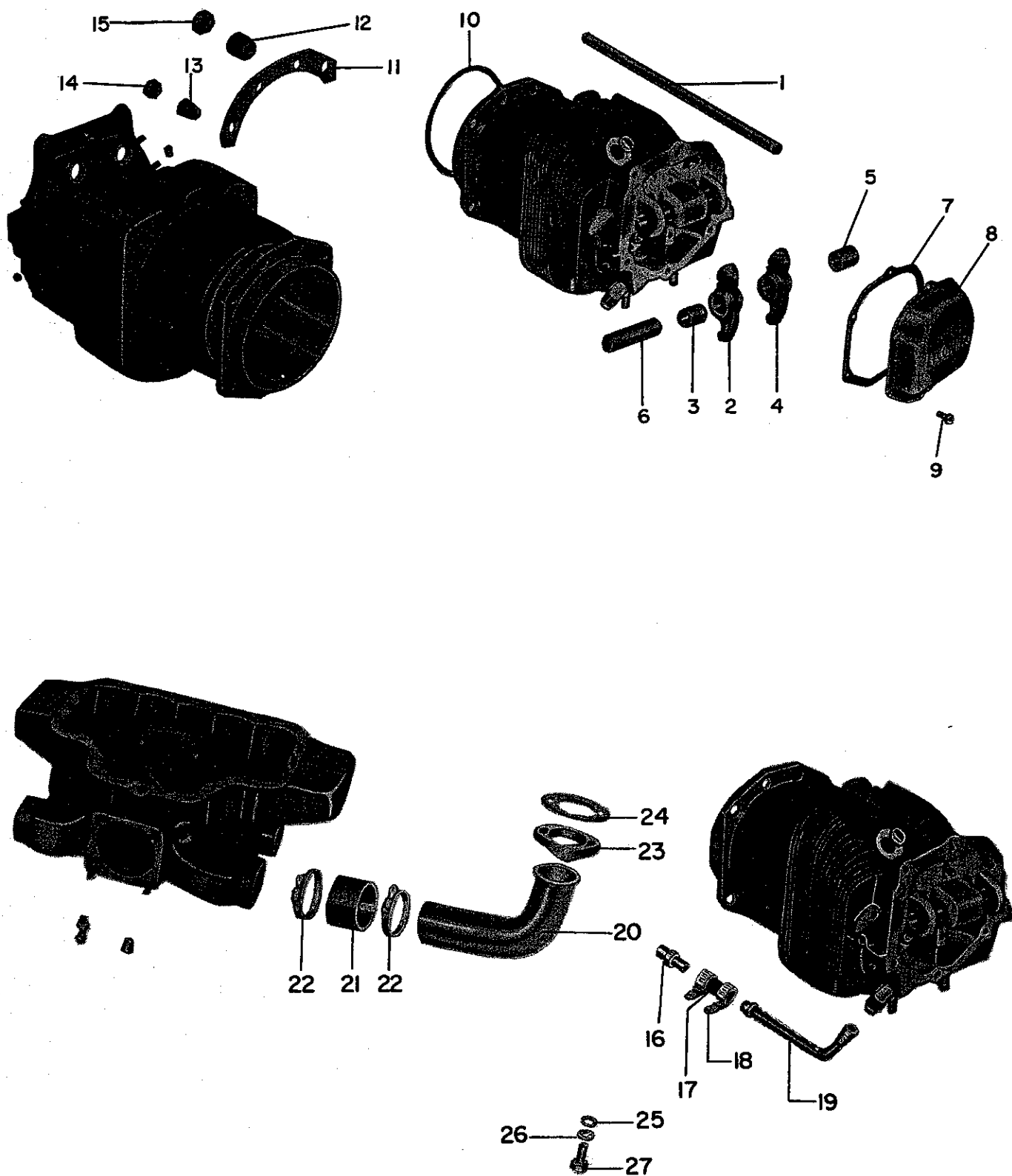


Figure 3-4. Rockers, Push Rods, Intake Pipes and Oil Drain Tubes

AVCO LYCOMING AIRCRAFT ENGINE GROUP ASSEMBLY PARTS LIST

Section 4 Ignition

AVCO LYCOMING PARTS CATALOG

O-320, IO-320 AND LIO-320 SERIES

SECTION 4

IGNITION SYSTEM

MAGNETOS

SECTION
4
PAGE
4-1

QUANTITY PER ASSEMBLY

O-320 SERIES

10-320

L10-320

F.	PART NUMBER	DESCRIPTION																															
			A2A	A2B	A2C	A3A	A3B	A3C	B2A	B2B	B2C	B3A	B3B	B3C	D2A	D2B	D2C	E2A	E2B	E2C	F2A	F2B	F2C	G2A									
71398		MAGNETO, S4LN-20	1	1		1	1		1	1	1	1	1	1	1	1		1	1														
71397		MAGNETO, Impulse coupling, S4LN-21	1	1		1	1		1	1	1	1	1	1	1	1		1	1														
71397		MAGNETO, Impulse coupling, S4LN-21	2																														
71432		MAGNETO, Impulse coupling, S4LN-21	2																														
72524		MAGNETO, S4LN-204 - STD				1		1	1						1		1																
73360		MAGNETO, S4LN-200, retard breaker - STD				1		1	1						1		1																
72524		MAGNETO, S4LN-204 - WCF													1				1														
73360		MAGNETO, S4LN-200, retard breaker - WCF													1				1														
75896		MAGNETO, S4LN-1209																1		1													
75897		MAGNETO, Impulse coupling, S4LN-1227																1		1													
72524		MAGNETO, S4LN-21 - WCF																	1														
77985		MAGNETO, Impulse coupling, S4LN-21, with feed thru capacitor - WCF																1															
71397		MAGNETO, Impulse coupling, S4LN-21																															
LW-11145		MAGNETO, Impulse coupling, S4LN-21, ft. magneto with elec. tach. breaker																															
7		MAGNETO, Impulse coupling, S4LN-21																															
7		MAGNETO, S4LN-21, with elec. tach. pick-up																															
LW-10518		MAGNETO, Impulse coupling, S4RN-21																															
77742		MAGNETO AND HARNESS ASSY., Rt.																															
76949		MAGNETO, Rt. (Slick model 4050)																															
77744		MAGNETO AND HARNESS ASSY., Left																															
76950		MAGNETO, Left (Slick model 4051)																															
MAGNETO PART NUMBER			71398	71397	71397	71432	72524	73360	75896	75897	72524	77985	71397	LW-11145	7	7	LW-10518	77742	76949	77744	76950												
MAGNETO RELATED PARTS																																	
61665		GEAR, Magneto impulse coupling	1	2	2				1	1	2	1	2	1																			
61163		GEAR, Magneto	1		1				1	1	1			1																			
72495		GEAR, Magneto, (retard breaker)							1																								
62224		GASKET, Magneto or adapter	3	4	4				2	1	3	4	3	4	1																		
78292		GASKET, Magneto								2					2																		
61666		ADAPTER, Magneto	1	2	2				1	1	1	1	2	1																			
75965		CLAMP, Magneto							4																								
76961		CLAMP, Magneto																															
STD-1727		WASHER, Plain, 3/4 in. OD x 21/64 ID x .13	4	4	4				4		4	4	4	4	4																		
STD-475		WASHER, 5/16 lock	4	4	4				4	4	4	4	4	4	4																		
STD-1410		NUT, 5/16-18 plain	4	4	4				4	4	4	4	4	4	4																		
61666		KIT ASSY., Magneto ground	2	2	2						1	2	1																				
71574		KIT, Magneto ground							2		1		1																				
71571		KIT, Magneto retard							1																								
* - Standard cylinder flange only.																																	

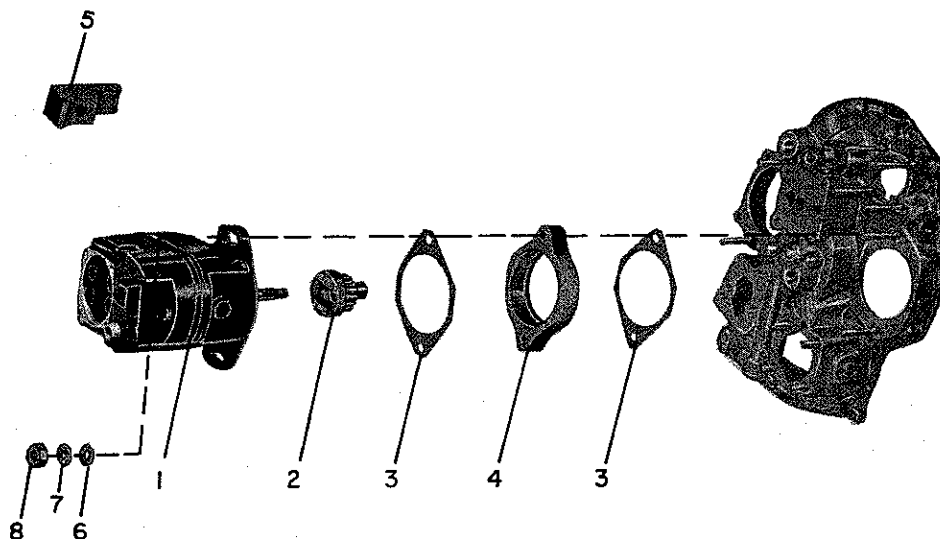


Figure 4-1. Magnetos

UNSHIELDED IGNITION HARNESS

			UNSHIELDED IGNITION HARNESS																								SECTION	
REF.	PART NUMBER	DESCRIPTION	QUANTITY PER ASSEMBLY																								4	
			O-320 SERIES												10-320				L10-320								PAGE	
			A2A	A2B	A3C	A3A	A3B	A3C	B2A	B2B	B3A	B3B	B3C	D2A	D2B	D2C	E2A	E2B	E2C	E2D	B1A	B1C	C1A	E2A	B1A	C1A	4-2	
73729		CABLE AND PLATE ASSY., Ignition, unshielded - STD	1	1			1					1	1															
73729		CABLE AND PLATE ASSY., Ignition, unshielded - WCF			1																							
1	45664	CABLE, Spark plug	AR	AR		AR						AR	AR															
2	73726	LOCKCLIP	8	8		8						8	8															
3	73245	EYELET	8	8		8						8	8															
4	61546	SLEEVE	12	12		12						12	12															
5	STD-957	GROMMET, .27 ID	4	4		4						4	4															
6	60670	PLATE, Spark plug cable	2	2		2						2	2															
7	73246	KIT ASSY., Ignition cable	2	2		2						2	2															
8	61561	PLATE, Ignition cable outlet	2	2		2						2	2															
9	61559	GROMMET, Ignition cable	2	2		2						2	2															
10	73245	EYELET	8	8		8						8	8															
11	72351	SCREW, No. 10-32	8	8		8						8	8															
12	71913	CLAMP, 1-1/2 ID with .34 dia. offset	4	4		4						4	4															
13	STD-553	SCREW, No. 6-32 x 1/2 in. long	4	4		4						4	4															
14	AN365-632C	NUT, No. 6-32, self-locking	4	4		4						4	4															
15	61385	CLIP, Ignition cable	2	2		2						2	2															
16	STD-8	WASHER, 1/4 plain	2	2		2						2	2															
17	STD-160	WASHER, 1/4 lock	2	2		2						2	2															
	AN500-416-12	SCREW, 1/4-20 x 3/4 in. long - STD	2	2		2						2	2															
	AN500-416-18	SCREW, 1/4-20 x 1.13 in. long		2																								
19	STD-1411	NUT, 1/4-20 plain	2	2		2						2	2															
	40239	PROTECTOR, Ignition cable (top leads)	4	4		4						4	4															

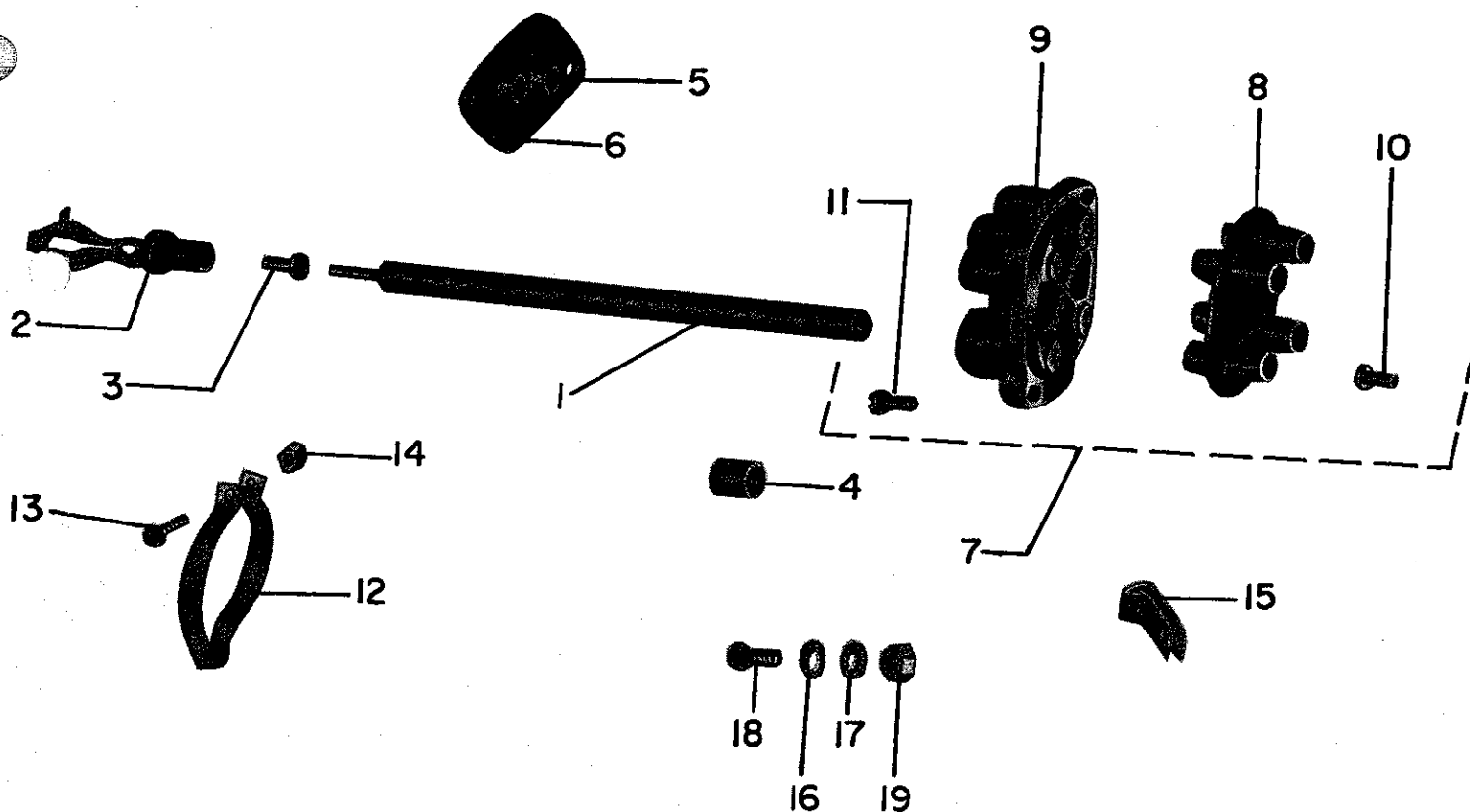


Figure 4-2. Unshielded Ignition Harness

SECTION
4
PAGE
4-3

76923	48 in. 72 in.	Silicone Insulation	70° 90° 110°	.63 .75	See Service Instruction No. 1153
Example:	76923	72	S	110	

Example: 76923 72 S 110 63

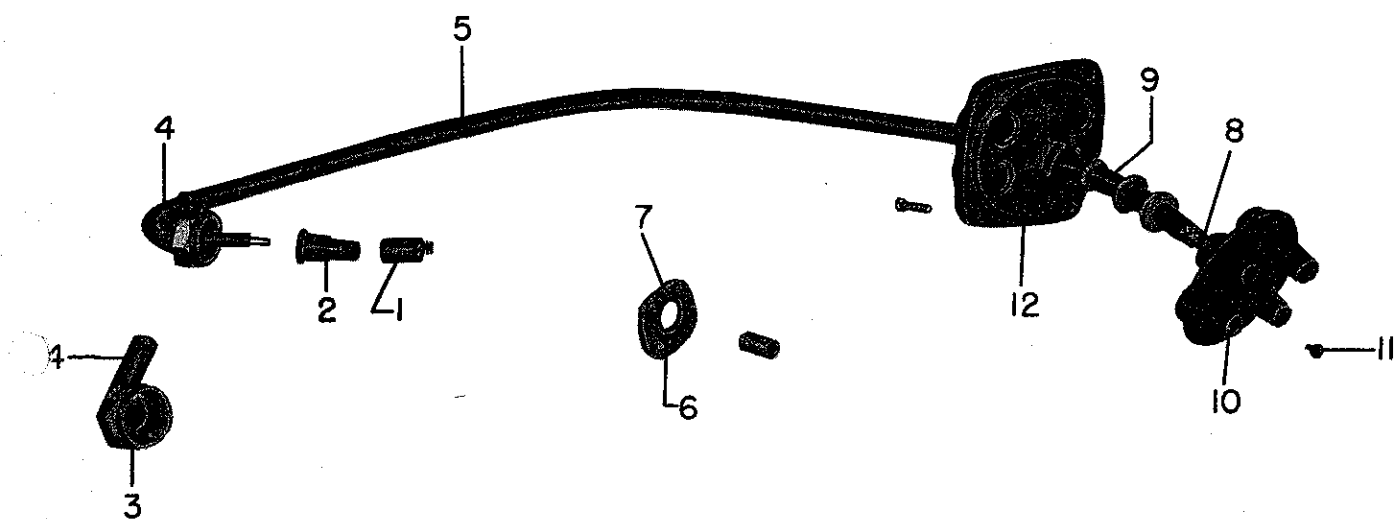


Figure 4-3. Shielded Ignition Cable - Avco Lycoming 5MM

HARNESS ASSEMBLY, SCINTILLA, -1200 SERIES MAGNETOS

QUANTITY PER ASSEMBLY

SECTION

4

PAGE

4-4

F.	PART NUMBER	DESCRIPTION	O-320 SERIES																					
			A2A	A2B	A2C	A3A	A3B	A3C	B2A	B2B	B3A	B3B	B3C	D2A	D2B	D2C	E2A	E2B	E2C	E2D	B7A	B7C	C7A	E2A
	LW-620505-1	HARNESS ASSY., Ignition, Scintilla, -1200 series magnetos																		1				
	10-320610-72	LEAD ASSY., Cyl. no. 1B																		1				
	10-320610-58	LEAD ASSY., Cyl. no. 3B																		1				
	10-320610-91	LEAD ASSY., Cyl. no. 1T																		1				
	10-320610-72	LEAD ASSY., Cyl. no. 3T																		1				
	10-320610-75	LEAD ASSY., Cyl. no. 2B																		1				
	10-320610-59	LEAD ASSY., Cyl. no. 4B																		1				
	10-320610-87	LEAD ASSY., Cyl. no. 2T																		1				
	10-320610-75	LEAD ASSY., Cyl. no. 4T																		1				
	10-349661-1	PLATE																		2				
	10-349224	GROMMET																		2				
	10-163011	FERRULE																		8				
	10-163012	EYELET																		8				
	10-209328	CABLE TIE																		7				
	10-320412-1	CLAMP																		2				
	10-320411	SCREW																		2				
	10-91431-8	SCREW																		6				
	10-13799	NUT																		6				
	10-78916	BRACKET																		3				
	10-30401	PLATE																		2				
	10-3007	GROMMET																		4				
	10-320297-3	CLAMP																		3				
	10-320298-1	CLAMP																		3				
	10-320298-2	CLAMP																		2				
	10-320297-1	CLAMP																		3				
	10-320471	TUBING, Spiral																		232				
	10-320328	BRACKET																		3				
	10-320297-1	CLAMP																		1				
	10-320298-3	CLAMP																		1				
	STD-1925	SCREW, 1/4-20 x 5/8 in. long																		3				
	STD-1916	SCREW, 1/4-20 x 1.13 in. long																		1				
	STD-160	WASHER, 1/4 lock																		1				
	STD-1411	NUT, 1/4-20 plain																		1				
	STD-1874	SCREW, 1/4-20 x 7/8 in. long																		4				
	40239	PROTECTOR, Ignition cable (top leads)																		4				

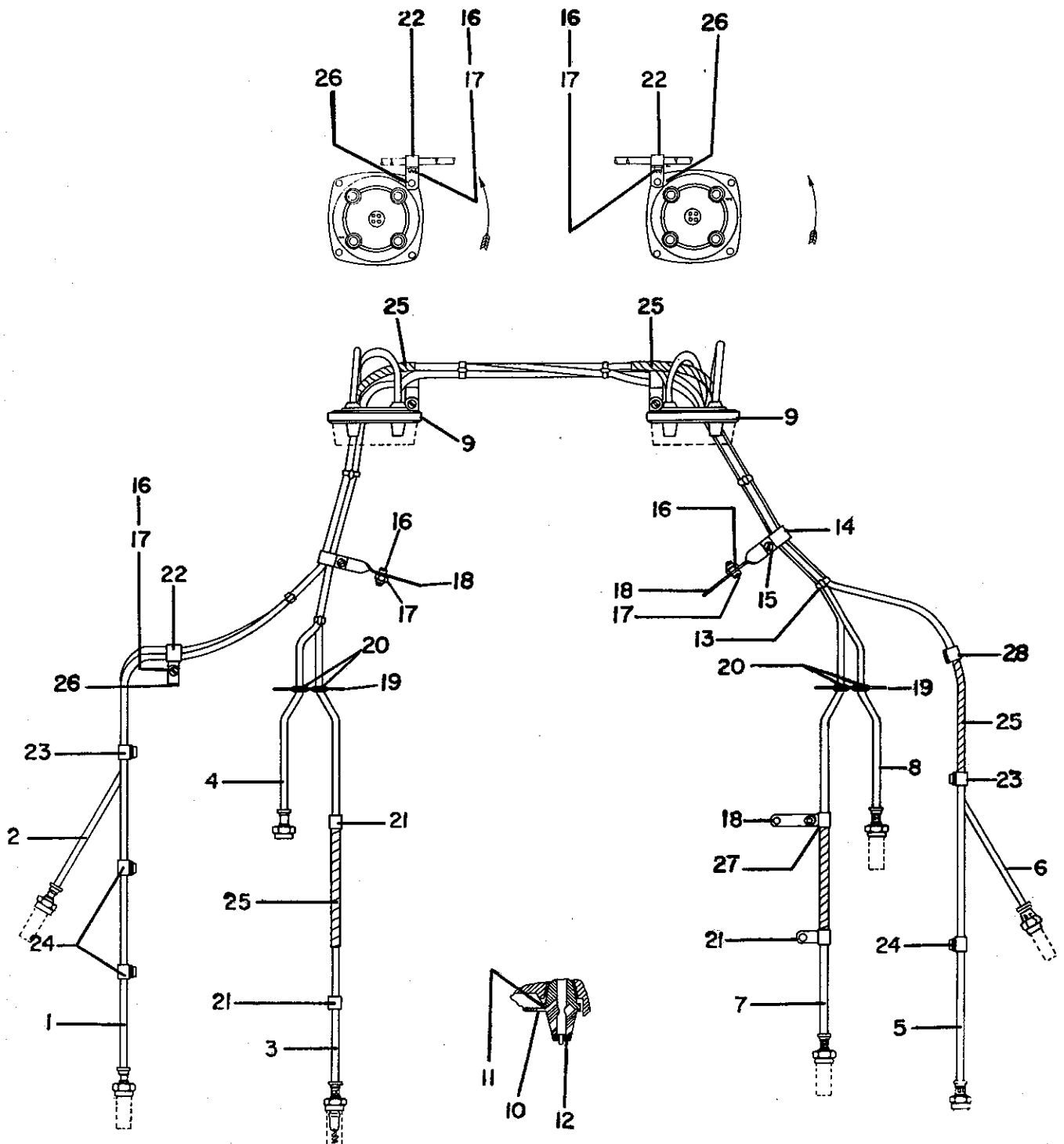
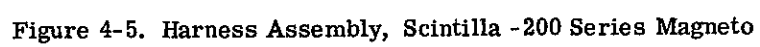


Figure 4-4. Harness Assembly, Scintilla -1200 Series Magnet

HARNESS ASSEMBLY, IGNITION, SCINTILLA, -200 SERIES MAGNETOS

SECTION
4
PAGE
4-5

		HARNESS ASSEMBLY, IGNITION, SCINTILLA, -200 SERIES MAGNETOS																						SECTION 4																												
		QUANTITY PER ASSEMBLY																						PAGE 4-5																												
		O-320 SERIES												10-320				LIO-320																																		
		A2A	A2B	A2C	A3A	A3B	A3C	B2A	B2B	B2C	B3A	B3B	B3C	D2A	D2B	D2C	E2A	E2B	E2C	E2D	F2A	F2B	F2C	F2D	BTA	BTC	CTA	DTA	E2A	BTA	CTA																					
F.	PART NUMBER	DESCRIPTION																																																		
	LW-620326-2	HARNESS ASSY., Ignition, Scintilla, -200 series magnetos																																																		
	10-320610-72	LEAD ASSY., Cyl. no. 1B																																																		
	10-320610-60	LEAD ASSY., Cyl. no. 3B																																																		
	10-320610-79	LEAD ASSY., Cyl. no. 1T																																																		
	10-320610-69	LEAD ASSY., Cyl. no. 3T																																																		
	10-320610-78	LEAD ASSY., Cyl. no. 4T																																																		
	10-320610-87	LEAD ASSY., Cyl. no. 2T																																																		
	10-320610-68	LEAD ASSY., Cyl. no. 4B																																																		
	10-320610-82	LEAD ASSY., Cyl. no. 2B																																																		
	10-35936-6	SCREW																																																		
	10-90404-4	NUT																																																		
	10-320283	CLAMP																																																		
	10-320297-2	CLAMP																																																		
	10-320298-1	CLAMP																																																		
	10-320471	TUBING, Spiral																																																		
	10-320298-2	CLAMP																																																		
	10-320050	GROMMET																																																		
	10-320394	PLATE																																																		
	10-320300-1	CLAMP																																																		
	10-91431-8	SCREW																																																		
	10-3799	NUT																																																		
	10-39027-4	BRACKET																																																		
	10-163011	FERRULE																																																		
	10-163012	EYELET																																																		
	10-320412-3	CLAMP																																																		
	10-320411	SCREW																																																		
	10-209328	TIE, Cable																																																		
	10-320297-2	CLAMP																																																		
	72351	SCREW, No. 10-32 self-locking																																																		
	STD-1874	SCREW, 1/4-20 x 7/8 in. long																																																		
	40239	PROTECTOR, Ignition cable (top leads)																																																		
	10-32326	SPRING																																																		
	10-320473	SLEEVE																																																		



HARNESS ASSEMBLY, IGNITION, SLICK

QUANTITY PER ASSEMBLY

SECTION

4

PAGE

4-6

O-320 SERIES

IO-320

LIO-320

PART NUMBER	DESCRIPTION	QUANTITY PER ASSEMBLY																							
		A2A	A3A	A4A	A5A	A6A	A7A	A8A	A9A	B2A	B3A	B4A	B5A	B6A	B7A	B8A	B9A	C2A	C3A	C4A	C5A	C6A	C7A	C8A	C9A
77743	HARNESS ASSY., Ignition, right, Slick magneto																								1
77745	HARNESS ASSY., Ignition, left, Slick magneto																								1
M-1735-22	LEAD ASSY., Cyl. no. B-3																								1
M-1735-32	LEAD ASSY., Cyl. no. T-3																								1
M-1735-29	LEAD ASSY., Cyl. no. B-1																								1
M-1735-38	LEAD ASSY., Cyl. no. T-1																								1
M-1735-29	LEAD ASSY., Cyl. no. T-4																								1
M-1735-23	LEAD ASSY., Cyl. no. B-4																								1
M-1735-36	LEAD ASSY., Cyl. no. T-2																								1
M-1735-30	LEAD ASSY., Cyl. no. B-2																								1
M-1671	FERRULE																								4
M-1677	SLEEVE																								4
M-1455	SPRING																								4
M-1498	ELECTRODE SCREW																								4
M-1458	FERRULE																								4
M-1673	NUT																								4
M-1738	SLEEVE																								4
7	ZIP STRAP																								8

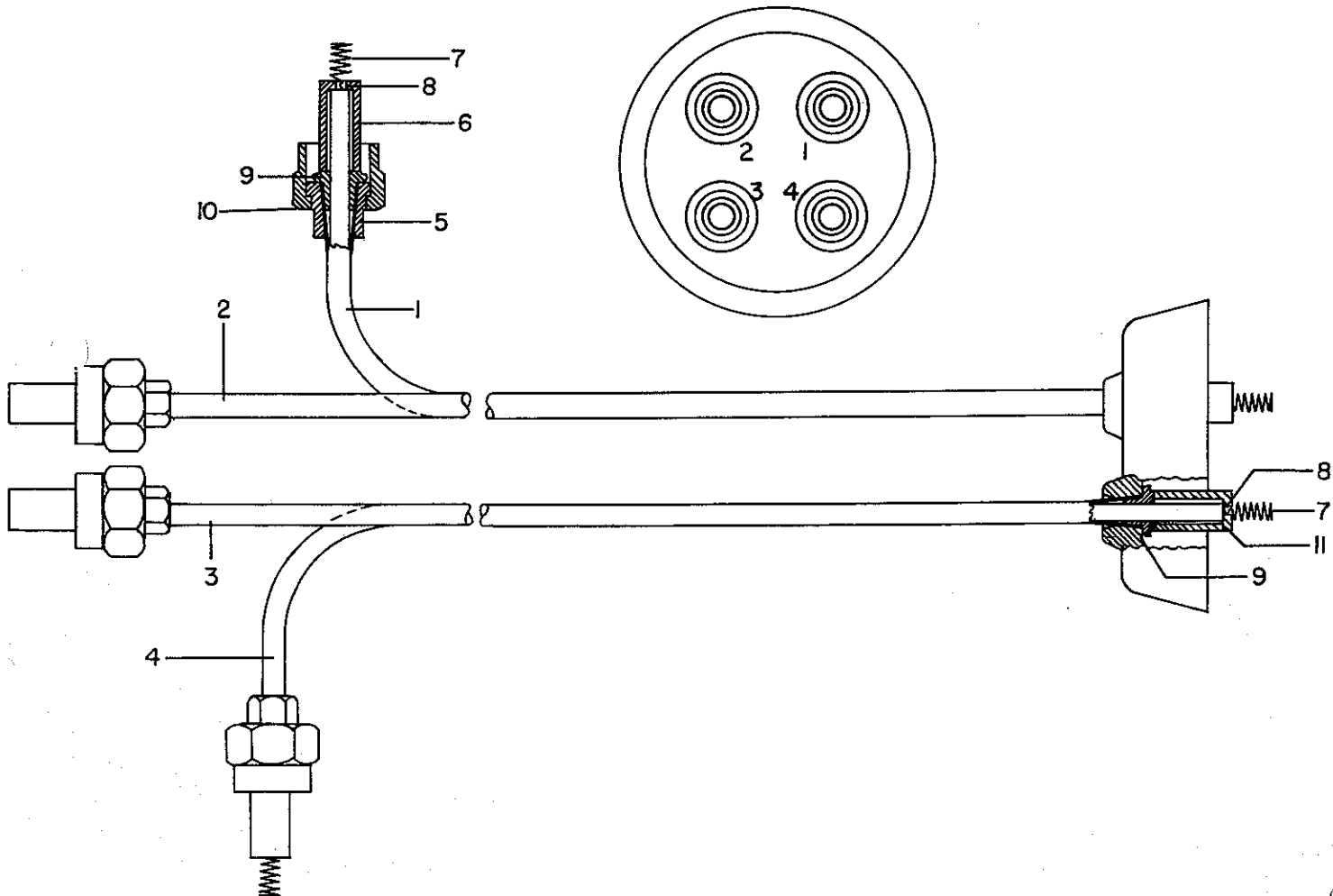


Figure 4-6. Harness Assembly, Ignition, Slick

SPARK PLUG

SECTION
4
PAGE
4-7

			SPARK PLUG																								SECTION 4		
			QUANTITY PER ASSEMBLY																								PAGE 4-7		
			O-320 SERIES																10-320				L10-320						
REF.	PART NUMBER	DESCRIPTION	A2A	A2B	A2C	A3A	A3B	A3C	B2A	B2B	B2C	B3A	B3B	B3C	D2A	D2B	D2C	E2A	E2B	E2C	E2D	B1A	B1C	C1A	D1A	E1A	B1A	C1A	
1	1182-L3	SPARK PLUG, Short reach, unshielded, AC A-88	8	8					8	8																			
1	1182-V1	SPARK PLUG, Short reach, unshielded, Champion M41N	8	8					8	8																			
2	1182-B3	SPARK PLUG, Short reach, shielded, Champion REM-40E							8	8	8	8	8	8	8	8	8	8	8	8				8	8	8		8	
2	1182-E3	SPARK PLUG, Short reach, shielded, AC S-88							8	8	8	8	8	8	8	8	8	8	8	8				8	8	8		8	
2	1182-F3	SPARK PLUG, Short reach, shielded, AC SR-88																	8										
2	1182-P2	SPARK PLUG, Short reach, shielded, AC SR83P														8			8										
2	1182-F5	SPARK PLUG, Short reach, shielded, Autolite PH26														8			8										
2	1182-N3	SPARK PLUG, Short reach, shielded, Champion REM38P														8			8										
2	1182-X2	SPARK PLUG, Short reach, shielded, Champion EM42E	8	8	8	8	8	8	8										8	8	8	8	8			8			
2	1182-T4	SPARK PLUG, Short reach, shielded, Autolite SH-20A	8	8	8	8	8	8	8										8	8	8	8	8			8			
2	1182-U4	SPARK PLUG, Short reach, shielded, Autolite SH-15	8	8	8	8	8	8	8										8	8	8	8	8						
2	1182-J5	SPARK PLUG, Short reach, shielded, Autolite, SH-15, Cessna crafted																				8							
2	1182-N4	SPARK PLUG, Long reach, shielded, Champion REP-37E																							8			8	
2	1182-M4	SPARK PLUG, Long reach, shielded, AC 171																							8			8	
3	STD-295	GASKET, Spark plug	8	8	8	8	8	8	8	8	8	8	8	8	8	8	8	8	8	8	8	8	8	8	8	8	8	8	8
		NOTE																											
		See latest Service Instruction No. 1042.																											
		CAUTION																											
		Do not use long reach plugs in any cylinder unless identified by yellow paint on the fins above the spark plug hole.																											

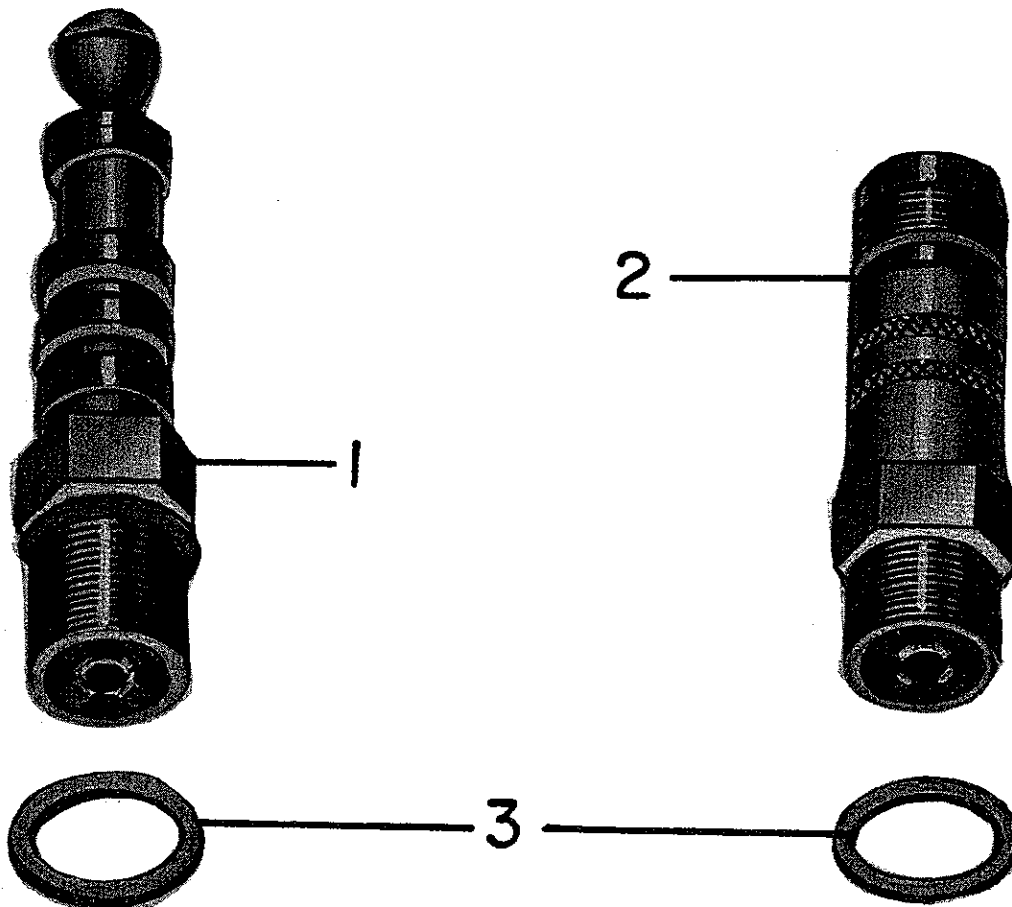


Figure 4-7. Spark Plugs

AVCO LYCOMING AIRCRAFT ENGINE GROUP ASSEMBLY PARTS LIST

Section 5 Electrical

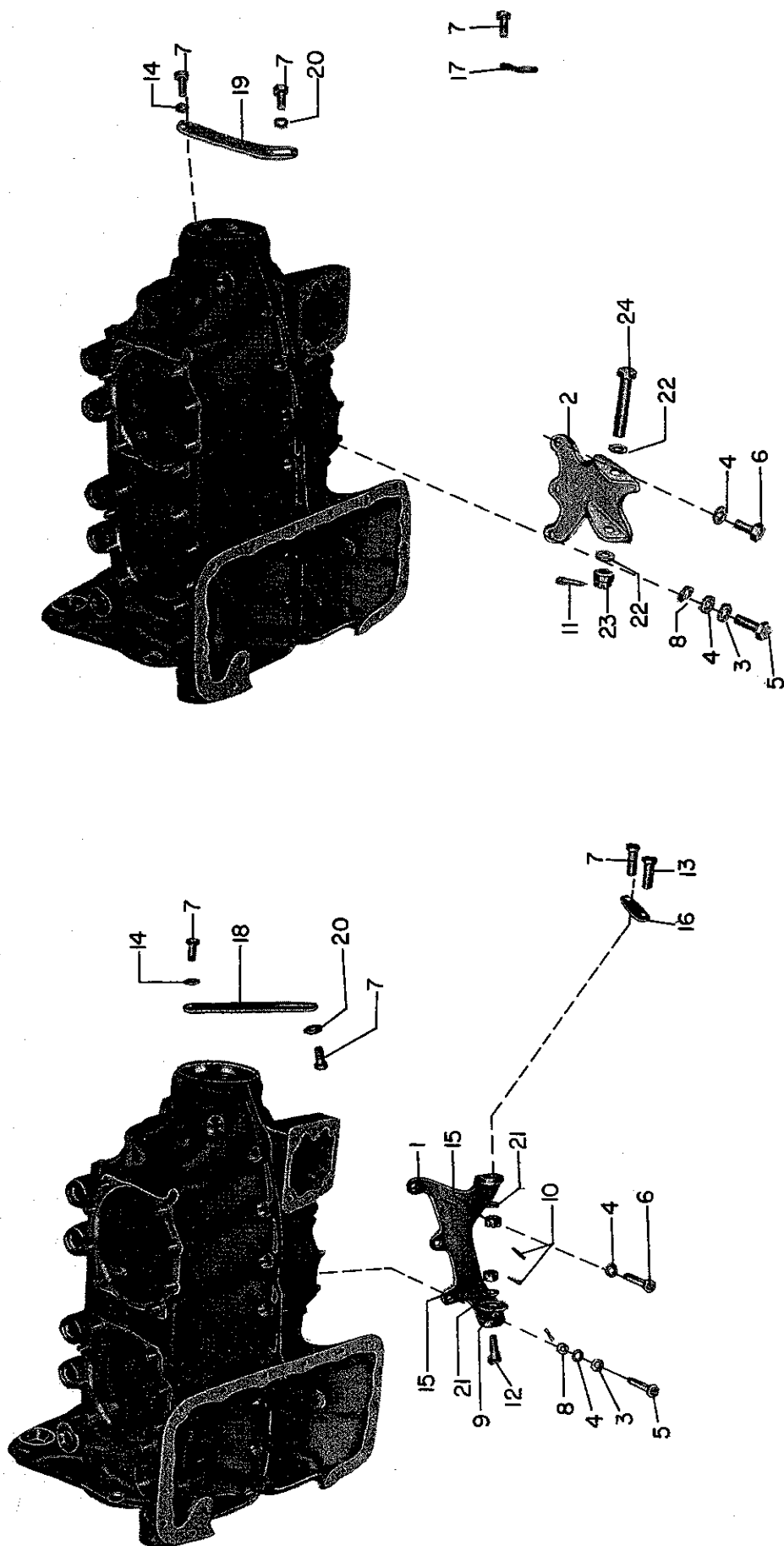
AVCO LYCOMING PARTS CATALOG

O-320, IO-320 AND LIO-320 SERIES

SECTION 5

ELECTRICAL SYSTEM

SECTION
5
PAGE
5-1



Generator /Alternator Brackets - Standard Cylinder Flange Engines

Figure 5-1. Generator/Alternator Bracket - Std. Cylinder Flange Engines

SECTION
5
PAGE
5-2

GENERATOR/ALTERNATOR BRACKETS, WIDE CYLINDER FLANGE ENGINES			QUANTITY PER ASSEMBLY																				5 PAGE 5-2							
			O-320 SERIES										10-320					L10-320												
F.	PART NUMBER	DESCRIPTION	A7A	A7B	A7C	A7D	A8A	A8B	A8C	A8D	B7A	B7B	B7C	B7D	C7A	C7B	C7C	C7D	D7A	D7B	D7C	D7D	E7A	E7B	E7C	E7D	F7A	F7B	F7C	F7D
	70419	BRACKET, Generator, front		1	1	1				1	1	1	1	1	1															
	75511	BRACKET, Generator, front																												
	70419	BRACKET, Generator, rear		1	1	1				1	1	1	1	1	1															
	75512	BRACKET, Generator, rear																												
	73383	LOCKPLATE		2	2	2				2	2	2	2	2	2															
	STD-1838	BOLT, 5/16-18 x .94 in. long		4	4	4				4	4	4	4	4	4															
	STD-1851	BOLT, 5/16-18 x 1.16 in. long		1	1	1				1	1	1	1	1	1															
	STD-1836*	BOLT, 5/16-18 x 1.91 in. long		1																										
	STD-1851	BOLT, 5/16-18 x 1.16 in. long		1	1	1				1	1	1	1	1	1															
	STD-1837*	BOLT, 5/16-18 x 2.28 in. long		1																										
	STD-2033**	BOLT, 5/16-18 x 1.28 in. long								1																				
	STD-35	WASHER, 5/16 plain		AR	AR	AR				AR	AR	AR	AR	AR	AR															
	STD-1420	NUT, 5/16-18 slotted		2	2	2				2	2	2	2	2	2															
	STD-68	PIN, Cotter, 1/16 dia. x 1/2 in. long		2	2	2				2	2	2	2	2	2															
	76028	LINK, Generator adjusting		1	1	1				1	1	1	1	1	1															
	STD-1817	BOLT, 5/16-18 x 3/4 in. long		2	2	2				2	2	2	2	2	2															
	STD-1727	WASHER, Plain, 3/4 OD x .34 ID		1	1	1				1	1	1	1	1	1															
	STD-35	WASHER, 5/16 plain		1	1	1				1	1	1	1	1	1															
	77718**	STRUT, Generator support								1																				
	STD-1817**	BOLT, 5/16-18 x 3/4 in. long								1																				
	7	BRACKET, Alternator		1						1					1	1														
	7	BRACKET, Alternator		1						1	1	1	1	1	1															
	76906&	BRACKET, Alternator																												
	77756#	BRACKET, Alternator																												
	AN6-32	BOLT, 3/8-24 x 3.33 (for 74324)		1						1																				
	AN6-14	BOLT, 3/8-24 x 1.58 (for 76533)		1						1	1	1	1	1	1															
	AN6-12	BOLT, 3/8-24 x 1.33 (for 77756)																												
	STD-33	WASHER, 3/8 plain		1						1					1	1	1	1	1	1										
	STD-33#	WASHER, 3/8 plain																												
	STD-33	WASHER, 3/8 plain		AR		AR				AR	AR				AR	AR	AR	AR	AR	AR										
	STD-872	NUT, 3/8-24 slotted		1						1					1	1	1	1	1	1										
	STD-713	PIN, Cotter, .09 dia. x 3/4 in. long		1						1					1	1	1	1	1	1										
	74325+	LINK, Alternator adjusting		1						1																				
	75380C	LINK, Alternator adjusting		1						1					1	1	1	1	1	1										
	76818	LINK, Alternator adjusting (Beech)		1						1					1	1	1	1	1	1										
	LW-10729&	LINK, Alternator adjusting																												
	STD-1817	BOLT, 5/16-18 x 3/4 in. long		2						2	2				2	2	2	2	2	2										
	STD-1858&	BOLT, 5/16-18 x .91 in. long																												
	STD-35	WASHER, 5/16 plain		1						1					1	1	1	1	1	1										
	STD-1727	WASHER, 3/4 OD x .34 ID		1						1					1	1	1	1	1	1										
	77757#	BRACKET, Alternator belt adjusting																												
	STD-1889#	BOLT, 5/16-18 x 1-7/32 long																												
	STD-1727#	WASHER, Plain, 3/4 OD x .34 ID																												
	STD-669#	WASHER, .52 ID x 1.00 in. OD																												
	STD-676#	NUT, 1/2-20, self-locking																												
	78639#	PULLEY AND SHAFT ASSY.																												
	78614#	PULLEY, Alt. belt adjusting																												
	78629#	BALL BEARING																												
	MS16625-1125#	RING, Internal retaining																												
	76135#	IDLER SHAFT																												
	76769#	LOCKWASHER																												
	74323+C	STRUT, Alternator support		1						1					1	1	1	1	1	1										
	76908&	STRUT, Alternator support																												
	STD-1817	BOLT, 5/16-18 x 3/4 in. long		1						1					1	1	1	1	1	1										
	STD-2069&	BOLT, 5/16-18 x 1.00 in. long																												
	AN6-16	BOLT, 3/8-24 x 1.83 long (Note 1)								1																				
	AN6-13	BOLT, 3/8-24 x 1.45 long (Note 2)		1						1					1	1	1	1	1	1										
	76534	SHIM, 1.13 OD x .41 ID (Note 1 and 2)		AR		AR				AR	AR				AR	AR	AR	AR	AR	AR										
	STD-33	WASHER, 3/8 plain (Note 1 and 2)		AR		AR				AR	AR				AR	AR	AR	AR	AR	AR										
	STD-872	NUT, 3/8-24, slotted		1						1					1	1	1	1	1	1										
	STD-713	PIN, Cotter, .09 dia. x 3/4 long		1						1					1	1	1	1	1	1										
	73383	LOCKPLATE, Alternator bracket		1						1					1	1	1	1	1	1										
	STD-1838	BOLT, 5/16-18 x .94 long		2						2	2				2	2	2	2	2	2										
	* - Special bolts for Piper installation only.																													
	** - For 24V-40A and 24V-50A generators only.																													
	+ - For 12V-70A Delco alternator.																													
	C - For 12V-40A, 12V-50A, 12V-60A, 12V-70A, 24V-50A Prestolite and 12V-40A Prestolite (Beech installation).																													
	# - For IO-320 engines only.																													
	& - For 12V-60A Ford alternator.																													
	NOTE 1																													
	Use when mounting Prestolite 12V-70A, 24V-50A and the 12V-70A alternator with idler pulley.																													
	NOTE 2																													
	Use when mounting Prestolite 12V-40A, 12V-50A, 12V-60A and the 12V-60A alternator with idler pulley.																													

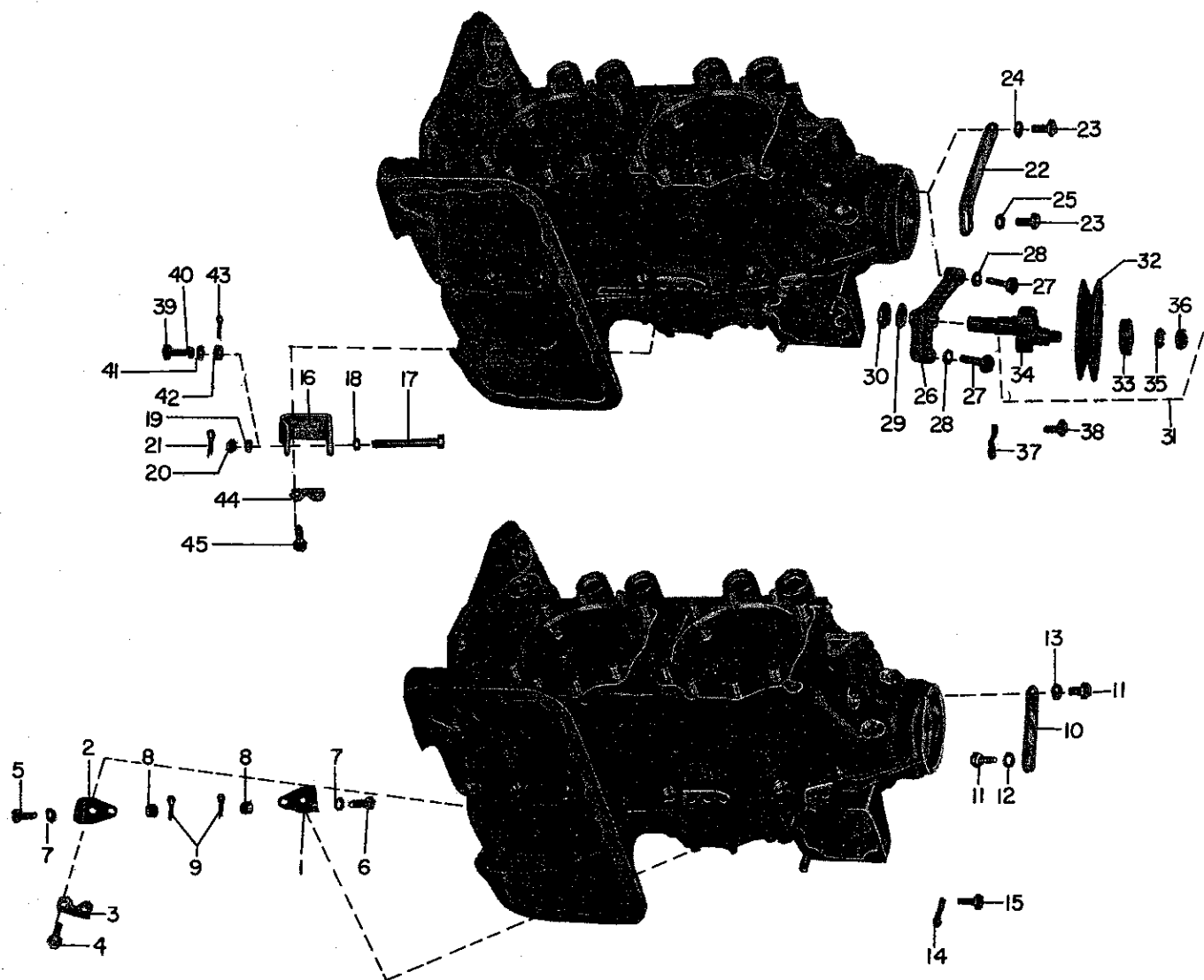
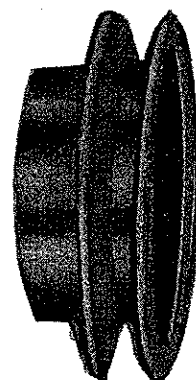
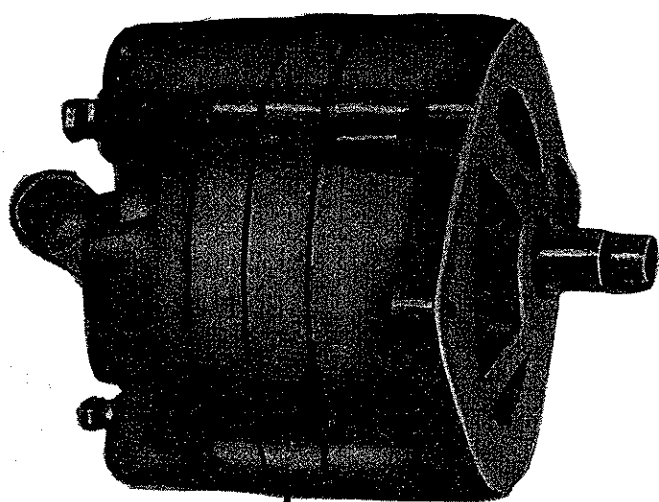
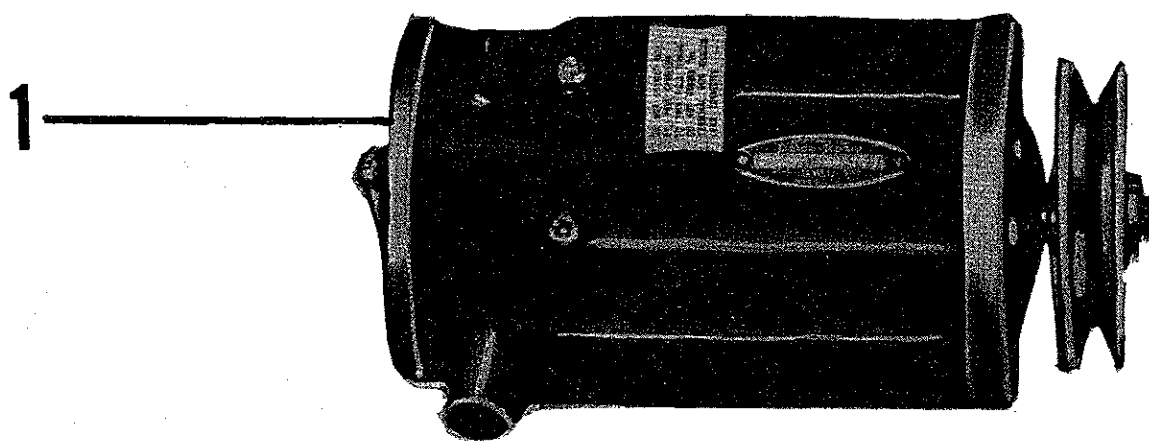


Figure 5-2. Generator/Alternator Bracket - Wide Cylinder Flange Engines

SECTION
5
PAGE
5-3



2

4

3

Figure 5-3. Generator and Alternator

GENERATOR/ALTERNATOR DRIVE BELT, STARTER AND SWITCH

SECTION

5

PAGE

5-4

QUANTITY PER ASSEMBLY

O-320 SERIES

IO-320

LIO-320

GENERATOR/ALTERNATOR DRIVE BELT, STARTER AND SWITCH			QUANTITY PER ASSEMBLY																						SECTION 5 PAGE 5-4							
F.	PART NUMBER	DESCRIPTION	O-320 SERIES													10-320				L10-320												
			A2A	A2B	A2C	A3A	A3B	A3C	B2A	B2B	B2C	B3A	B3B	B3C	D1A	D2A	D2B	D2C	E1A	E2A	E2B				E2C	E2D	B1A	B1C	C1A	C2A	B1A	C1A
	60886	BELT, Generator drive - 1.91:1 (less than 24V-40A)	1	1	1	1	1	1	1	1	1	1	1	1	1	1	1	1	1	1					1	1	1	1				
	71579	BELT, Generator drive - 1.91:1 (24V-40A and up)									1																					
	76026	BELT, Alternator drive (without idler pulley)		1				1			1		1		1	1		1	1	1	1				1		1	1				
	74519	BELT, Alternator drive (with idler pulley)																						1	1	1			1	1		
	76210	STARTER, 12V, 10-12 pitch, Prestolite MZ-4204	1	1	1	1	1	1	1	1	1					1	1			1								1				
	76211	STARTER, 12V, 12-14 pitch, Prestolite MZ-4206	1	1			1	1	1	1	1	1	1	1	1	1	1	1	1	1	1	1	1	1	1	1	1	1				
	76212	STARTER, 24V, 12-14 pitch, Prestolite MHB-4001	1	1				1		1	1		1						1	1							1					
	LW-10556	STARTER, 12V, 12-14 pitch, 3.38:1 internal reduction, reverse rotation, Prestolite MZ-4216																														
	STD-35	WASHER, 5/16 plain	4	4	4	4	4	4	4	4	4	4	4	4	4	4	4	4	4	4	4	4	4	4	4	4	4	4	4	4	4	4
	STD-475	WASHER, 5/16 lock	4	4	4	4	4	4	4	4	4	4	4	4	4	4	4	4	4	4	4	4	4	4	4	4	4	4	4	4	4	4
	STD-1202*	BOLT, 5/16-18 x 1.09 long		1				1											1								1					
	STD-1323**	BOLT, 5/16-18 x 1.16 long	1	1	1	1	1	1	1	1	1	1	1	1	1	1	1	1	1	1	1	1	1	1	1	1	1	1	1	1	1	1
	STD-1410	NUT, 5/16-18, plain	3	3	3	3	3	3	3	3	3	3	3	3	3	3	3	3	3	3	3	3	3	3	3	3	3	3	3	3	3	3
	76773	SWITCH, Magnetic, 12 volt	1	1	1	1	1	1	1	1	1	1	1	1	1	1	1	1	1	1	1	1			1	1	1	1	1			
	76775	SWITCH, Magnetic, 24 volt									1								1	1							1					
		* - Use with starter 76210																														
		** - Use with starter 76211, 76212 and LW-10556.																														
		See latest edition of Service Instruction No. 1154 for model application.																														

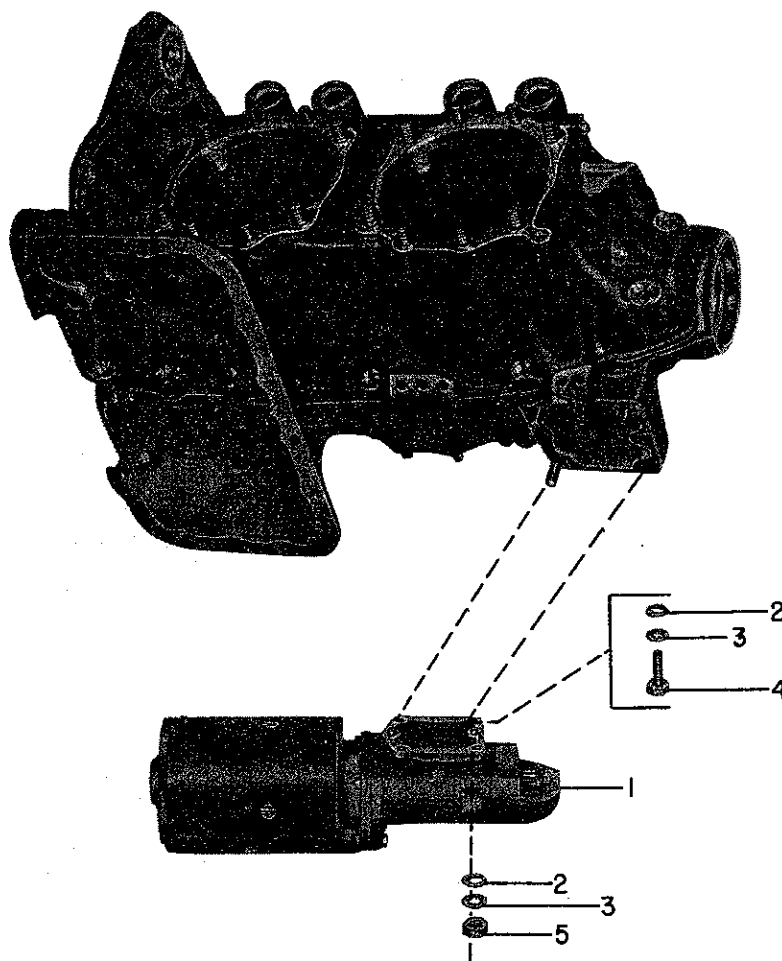


Figure 5-4. Generator/Alternator Drive Belt, Starter and Switch

SECTION
5
PAGE
5-5

VOLTAGE REGULATOR AND RELAY			QUANTITY PER ASSEMBLY																								SECTION	
REF.	PART NUMBER	DESCRIPTION	O-320 SERIES												10-320				L10-320		5 PAGE 5-5							
			A2A	A2B	A2C	A3A	A3B	A3C	B2A	B2B	B2C	B3A	B3B	B3C	D1A	D2A	D2B	D2C	E1A	E2A		E2B	E2C	E2D	B1A	B1C	C1A	C1B
	62833	REGULATOR, Voltage, 12V-35A, non-parallel, Delco-Remy 1118704	1	1	1	1	1	1	1	1	1	1	1	1	1	1	1	1	1	1	1	1						
	68626	REGULATOR, Voltage, 12V-35A, parallel, Delco-Remy 1119145	1				1	1	1				1	1											1			
	68872	REGULATOR, Voltage, 24V-25A, non-parallel, Delco-Remy 1118799		1										1														
	71350	REGULATOR, Voltage, 24V-25A, parallel, Delco-Remy 1118976							1																			
	71745	REGULATOR, Voltage, 12V-50A, non-parallel, Delco-Remy 1119224					1	1			1	1	1	1				1							1			
	72077	REGULATOR, Voltage, 12V-50A, parallel, Delco-Remy 1119246							1				1	1											1	1	1	
	72205	REGULATOR, Voltage, 12V-20A, non-parallel, Delco-Remy 1119226	1	1				1	1	1	1	1	1	1				1	1									
	74291	REGULATOR, Voltage, 12V-70A, Full transistor, Delco-Remy 9000590		1							1								1	1								
	LW-10179	REGULATOR, Voltage, 24V, Full transistor, Prestolite VSF-7403									1							1	1									
	LW-10185	REGULATOR, Voltage, 12V, Full transistor, Prestolite VSF-7203		1			1						1		1		1	1	1	1	1				1	1	1	1
	71979*	REGULATOR, Voltage, 24V-40A, parallel, Delco Remy 1119237	1			1	1				1		1		1	1	1	1	1	1	1				1			
	72311*	REGULATOR, Voltage, 24V-40A, non-parallel, Delco-Remy 1119273	1			1	1				1		1		1	1	1	1	1	1	1				1			
	74292*	REGULATOR, Voltage, 24V-50A, Full transistor, Delco-Remy 9000591	1			1	1				1		1		1	1	1	1	1	1	1				1			
	LW-11139*	REGULATOR, 12 volt, full transistor, for twin engine paralleling system, Prestolite alternators	1			1	1				1		1		1	1	1	1	1	1	1				1	1	1	1
	LW-11140*	REGULATOR, 24 volt, full transistor, for twin engine paralleling system, Prestolite alternator	1			1	1				1		1		1	1	1	1	1	1	1				1	1	1	1
	LW-11357*	REGULATOR, 12 volt, transistorized, Wico - X17990, use with Prestolite internally grounded field alternators - single engine installation	1			1	1				1		1		1	1	1	1	1	1	1				1			
	68628**	RELAY, 12 volt, paralleling, Delco-Remy 1116887, use w/reg. 68626, 68810, or 72077	1				1	1	1	1		1	1												1			
	71349**	RELAY, 24 volt, paralleling, Delco-Remy 1116902, use w/reg. 71350 or 71979	1				1	1	1			1	1		1	1	1	1	1	1	1				1	1	1	1
	74661	RELAY, Overvoltage, 12 volt, Delco-Remy 1115831, use w/reg. 74291	1								1							1	1									
	74804*	RELAY, Overvoltage, 24 volt, Delco-Remy 1115832, use w/reg. 74292	1				1	1			1		1		1	1	1	1	1	1	1				1			
	78059*	RELAY, Overvoltage, 12 volt, Prestolite X17621, use w/reg. LW-10185 or LW-11139	1			1					1		1		1	1	1	1	1	1	1				1	1	1	1
	78060*	RELAY, Overvoltage, 24 volt, Prestolite X17620, use w/reg. LW-10179 or LW-11140									1							1	1									
	73340	REGULATOR, Voltage, 24V-50A, non-parallel									1																	
		* - Optional equipment.																										
		** - One required each pair of engines.																										

AVCO LYCOMING PARTS CATALOG

O-320, IO-320 AND LIO-320 SERIES

SECTION 6

FUEL INDUCTION SYSTEM

FUEL PUMP

SECTION
6
PAGE
6-1

REF.	PART NUMBER	DESCRIPTION	QUANTITY PER ASSEMBLY																							
			O-320 SERIES												10-320				LIO-320							
			A3/A	A3/B	A3/C	A3/D	A3/E	A3/F	A3/G	A3/H	A3/I	A3/J	A3/K	A3/L	B3/A	B3/B	B3/C	B3/D	B3/E	B3/F	B3/G	B3/H	B3/I	B3/J	B3/K	B3/L
1	75246	PUMP, Fuel, low pressure, dual diaphragm	1	1	1	1	1	1	1	1	1	1	1	1	1	1	1	1	1	1	1	1	1	1	1	
1	75247	PUMP, Fuel, high pressure, dual diaphragm																								
2	60096	GASKET, Fuel pump	1	1	1	1	1	1	1	1	1	1	1	1	1	1	1	1	1	1	1	1	1	1	1	
3	STD-33	WASHER, 3/8 plain	2	2	2	2	2	2	2	2	2	2	2	2	2	2	2	2	2	2	2	2	2	2	2	
3	STD-2032*	WASHER, 3/4 OD x .39 ID x .09 thick																								
4	STD-1882	SCREW, 3/8-16 x 1.28 in. long	2	2	2	2	2	2	2	2	2	2	2	2	2	2	2	2	2	2	2	2	2	2	2	
5	61544	PLUNGER, Fuel pump, long	1	1	1	1	1	1	1	1	1	1	1	1	1	1	1	1	1	1	1	1	1	1	1	
	75135	BAFFLE ASSY., Fuel pump																								
	75686	ELBOW, 5/16 tubing, 9/16-18																								
	MS29512-6	SEAL, Oil, 5/64 dia. x 15/32 in. ID																								
6	65098	COVER, Diaphragm fuel pump drive	1	1	1	1	1	1	1	1	1	1	1	1	1	1	1	1	1	1	1	1	1	1	1	
7	60096	GASKET, Fuel pump drive cover	1	1	1	1	1	1	1	1	1	1	1	1	1	1	1	1	1	1	1	1	1	1	1	
8	STD-33	WASHER, 3/8 plain	2	2	2	2	2	2	2	2	2	2	2	2	2	2	2	2	2	2	2	2	2	2	2	
9	STD-1592	BOLT, 3/8-16 x 3/4 in. long	2	2	2	2	2	2	2	2	2	2	2	2	2	2	2	2	2	2	2	2	2	2	2	
10	76188	PUMP, Fuel, Lear-Siegler RG-17980A																								
10	76486**	PUMP, Fuel, Lear-Siegler RG-17980D																								
10	LW-11166**	PUMP, Fuel, Lear-Siegler RG-17980K																								
11	1691-C	GASKET, Fuel pump																								
12	LW-10799**	SPACER, Fuel pump insulating																								
13	STD-35	WASHER, 5/16 plain (for pump 76188)																								
13	STD-35	WASHER, 5/16 plain (for pump 76486 or LW-11166)																								
14	STD-475	WASHER, 5/16 lock																								
15	STD-1410	NUT, 5/16-18 plain																								
16	75920	SPACER, Fuel pump stud																								
17	60431	COVER, AN fuel pump drive																								
	1691-C	GASKET, AN fuel pump drive cover																								
18	STD-35	WASHER, 5/16 plain																								
19	STD-475	WASHER, 5/16 lock																								
20	STD-1410	NUT, 5/16-18 plain																								
21	75507+	KIT ASSY., Fuel pump, dual diaphragm, lo-pressure	1	1	1	1	1	1	1	1	1	1	1	1	1	1	1	1	1	1	1	1	1	1	1	
	75246	PUMP, Fuel, lo-pressure	1	1	1	1	1	1	1	1	1	1	1	1	1	1	1	1	1	1	1	1	1	1	1	
22	75505	ADAPTER, Straight thd. connector	2	2	2	2	2	2	2	2	2	2	2	2	2	2	2	2	2	2	2	2	2	2	2	
23	MS-29512-6	"O" RING, 3/8 dia. tubing	2	2	2	2	2	2	2	2	2	2	2	2	2	2	2	2	2	2	2	2	2	2	2	
21	75506+	KIT ASSY., Fuel pump, dual diaphragm, hi-pressure																								
	75247	PUMP, Fuel, hi-pressure																								
22	75505	ADAPTER, Straight thd. connector																								
23	MS-29512-6	"O" RING, 3/8 dia. tubing																								

* - Use with fuel pump 75247 only.

** - Use insulating spacer LW-10799 with fuel pumps 76486 or LW-11166.

± - Kit 75506 or 75507 is used to replace diaphragm fuel pumps with tapered thread connections.

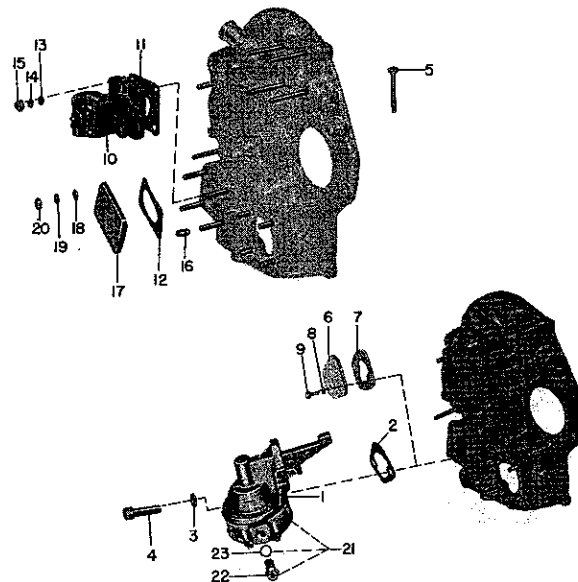


Figure 6-1. Fuel Pump